

**FLUX\_001**

2022-11-24 → 2023-01-17

Dante Sisofo

---

---



---

## WHAT IS FLUX

---

FLUX is an open-source chronological photography publishing and archival system. Every 50 photographs automatically becomes a new issue.

The system generates:

- PDF publication
- contact sheet
- metadata manifest
- original JPEG files
- digital archive update

---

STEP\_01

### CAPTURE

---

CAMERA: compact digital camera

FILE TYPE: small JPEG

COLOR MODE: high contrast black and white

PURPOSE:

- eliminate processing
- eliminate workflow friction
- maximize speed

---

STEP\_02

### SELECT

---

GENERATE DIGITAL CONTACT SHEET

REVIEW SMALL THUMBNAILS ONLY

MAKE FINAL SELECTIONS  
FROM CONTACT SHEET VIEW

SELECT QUICKLY

DO NOT:

- overedit
- oversequence
- overanalyze

TARGET: 50 PHOTOGRAPHS PER ISSUE

---

---

STEP\_03

### UPLOAD

---

DRAG SELECTED FILES INTO:

/FLUX\_UPLOAD/

RUN:

./flux\_update.command  
OR: python3 flux\_update.py

---

STEP\_04

### SYSTEM AUTOMATION

---

SYSTEM AUTOMATICALLY:

- detects new photographs
- reads timestamps
- preserves chronological order
- generates derivatives
- creates metadata
- generates SHA256 hashes
- rebuilds manifests
- updates digital archive
- rebuilds timeline
- uploads archive online

DIGITAL ARCHIVE:

flux.dantesisofo.com

---

### ARCHIVE STRUCTURE

---

DIGITAL ARCHIVE INCLUDES:

- chronological timeline
- issue browser
- downloadable PDFs
- original JPEG files
- metadata manifests
- contact sheets

ALL PHOTOGRAPHS REMAIN  
IN CHRONOLOGICAL ORDER

---

---

STEP\_05

### ISSUE GENERATION

---

WHEN 50 NEW PHOTOGRAPHS  
ARE DETECTED:

SYSTEM AUTOMATICALLY:

- creates next FLUX issue
- sequences photographs
- preserves capture order
- generates issue number
- generates issue PDF
- updates publication archive

NO MANUAL LAYOUT REQUIRED

---

STEP\_06

### PRINT

---

PRINT: double sided

PAPER: 8.5 x 11 office paper

STACK PAGES

ALIGN EDGES

DO NOT FOLD

STAPLE LEFT SIDE

USING COVER MARKS

---

STEP\_07

### ARCHIVE

---

STORE ISSUES CHRONOLOGICALLY

PRESERVE ISSUE NUMBERS

MAKE PUBLICLY ACCESSIBLE

PRINT

DISTRIBUTE

DOWNLOAD

REPRODUCE

---

END\_OF\_PROTOCOL

---





















































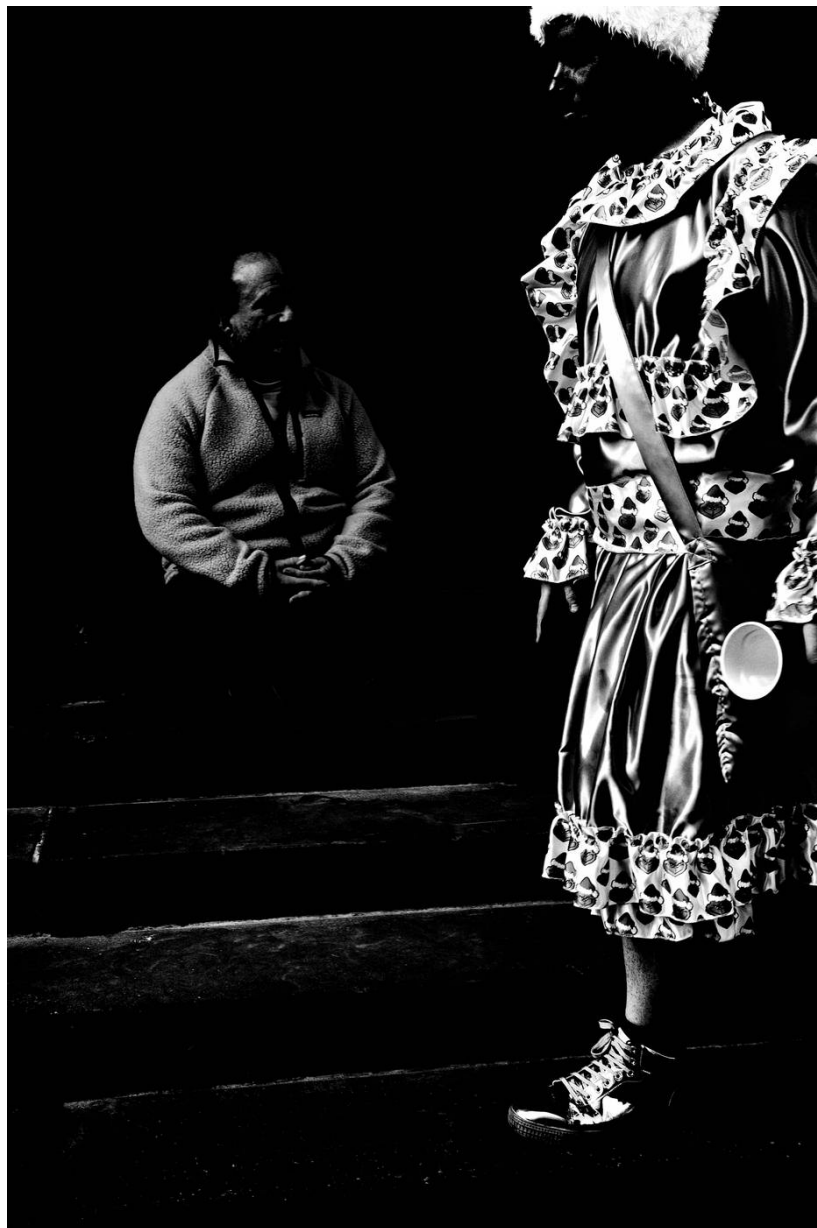




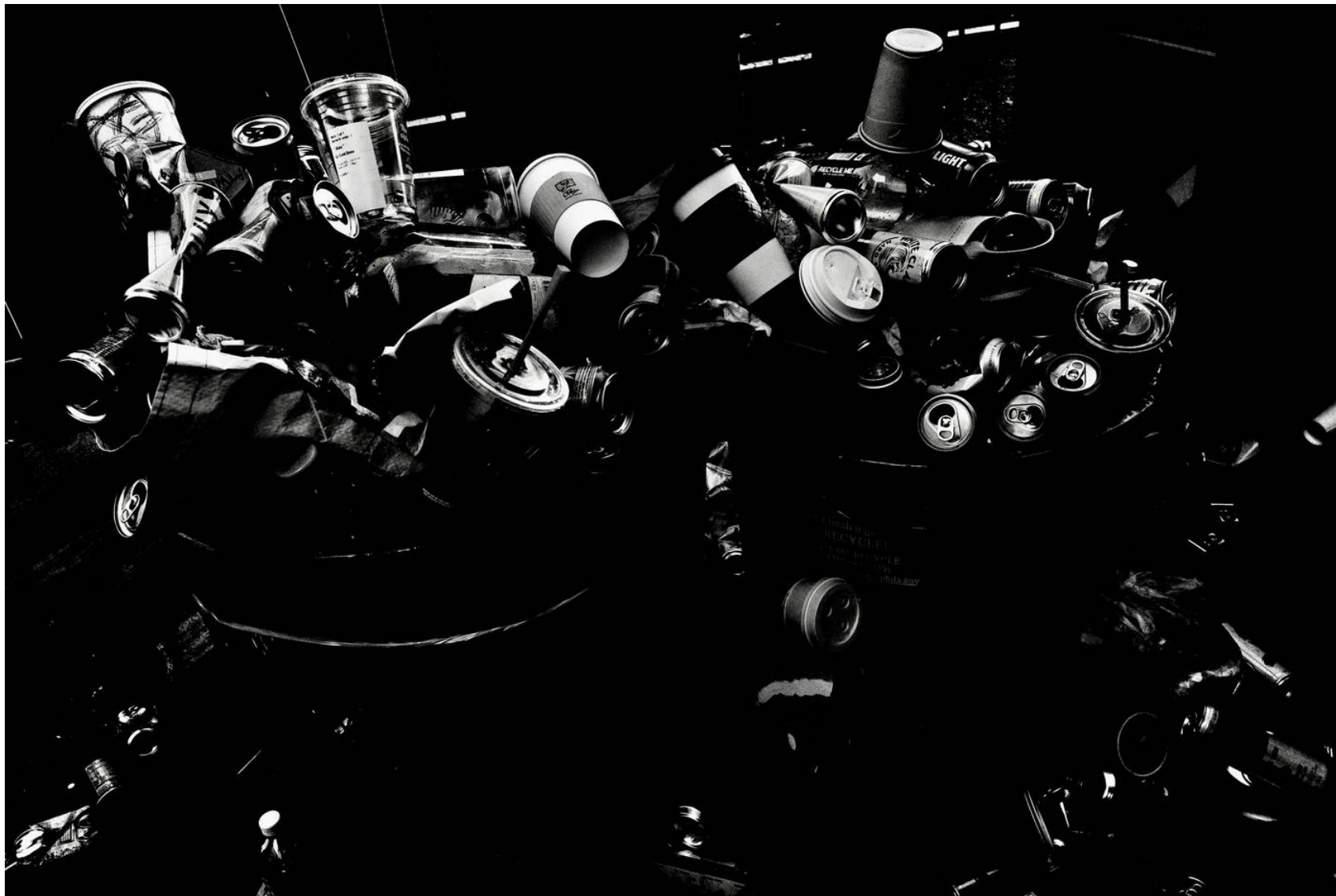




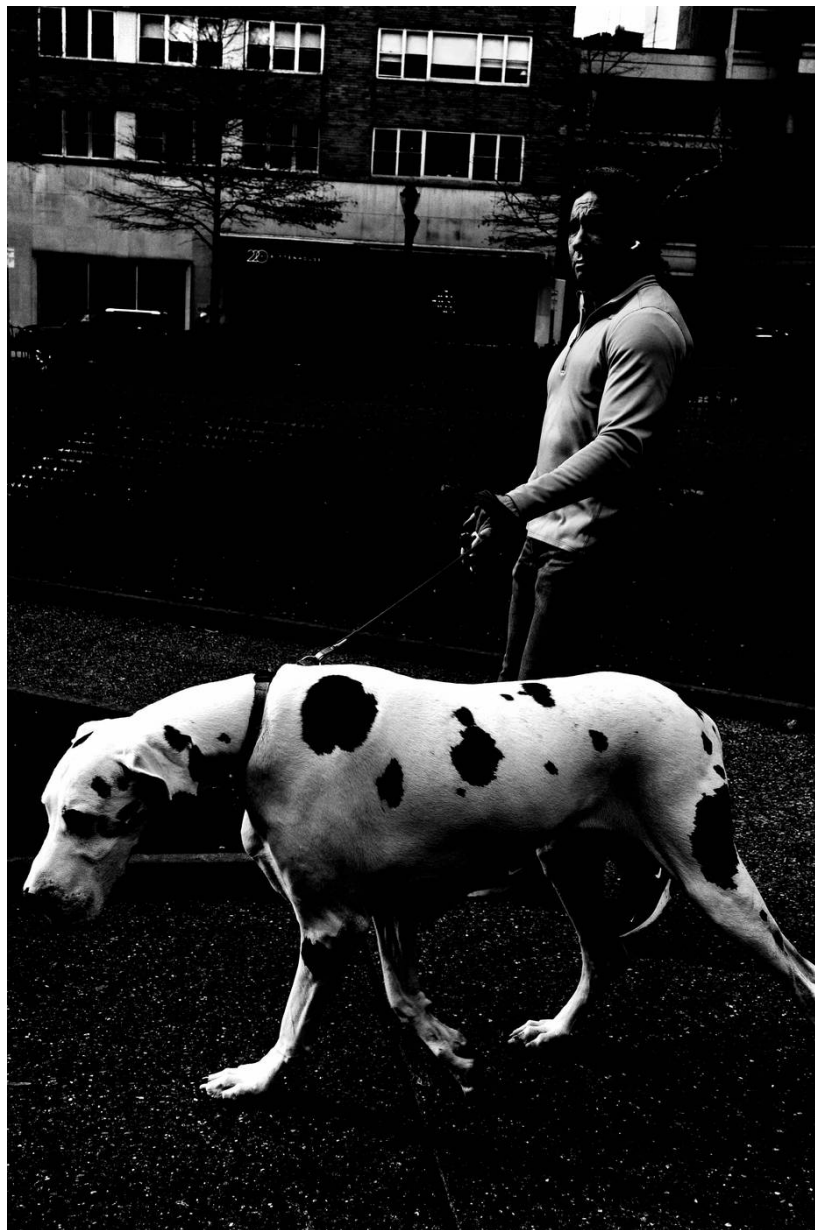






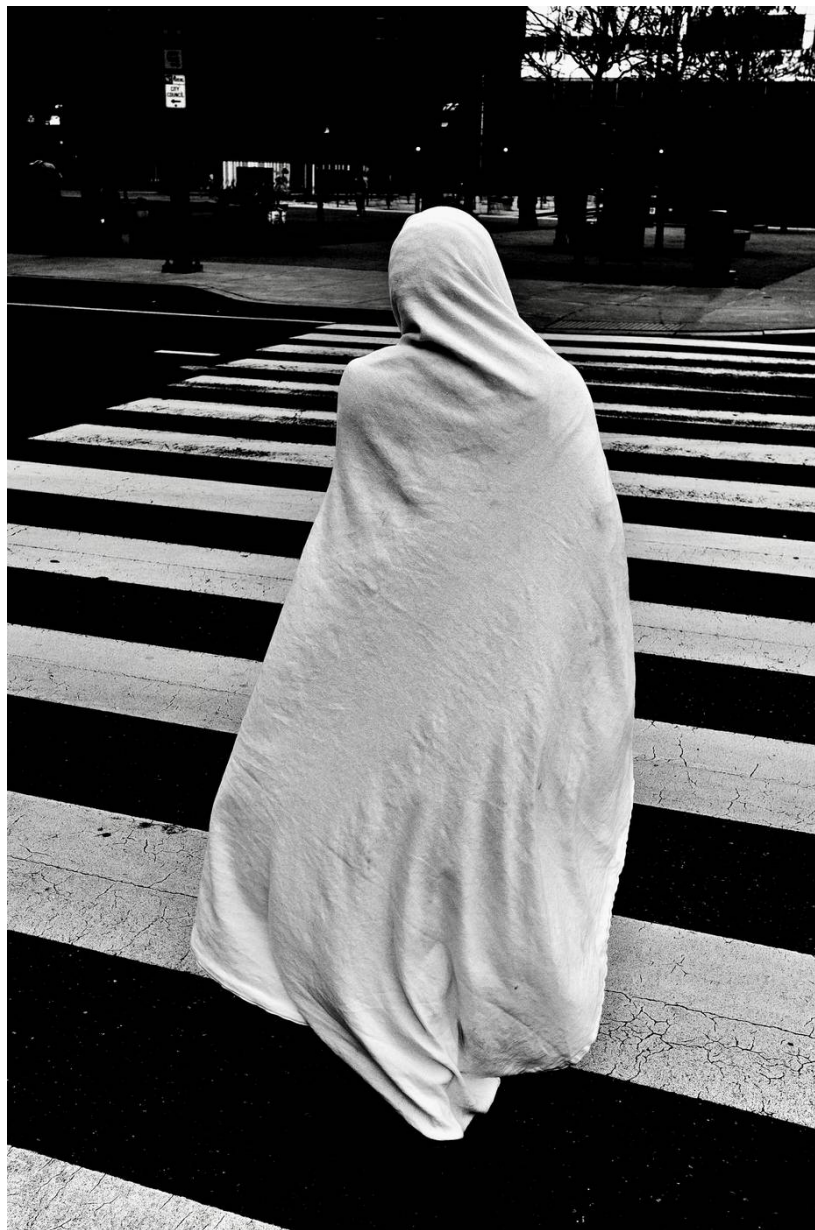










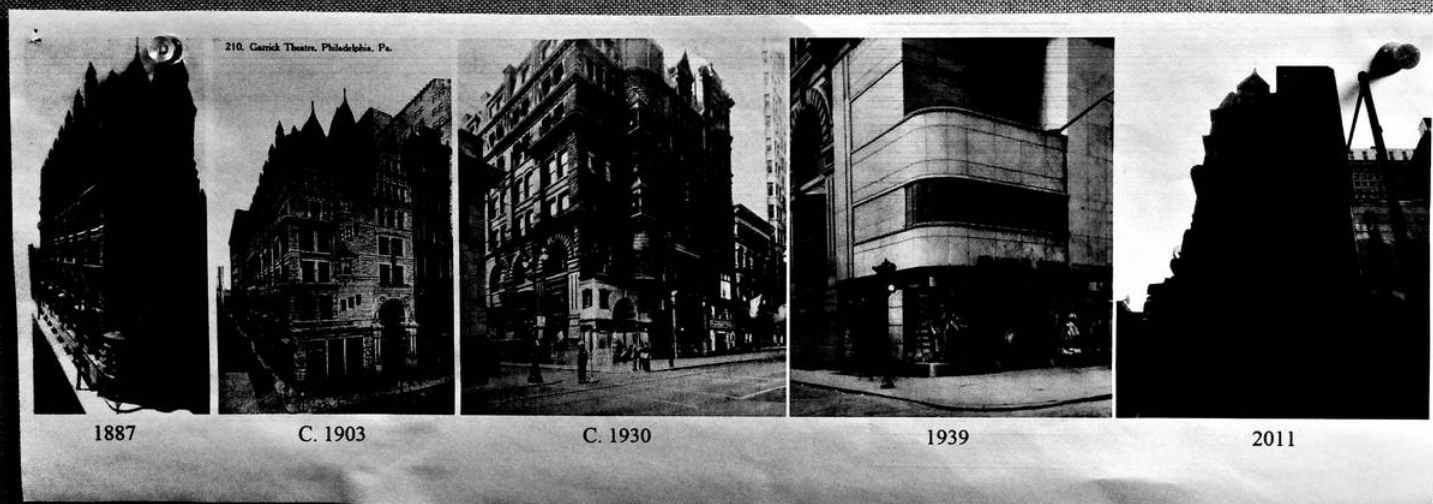


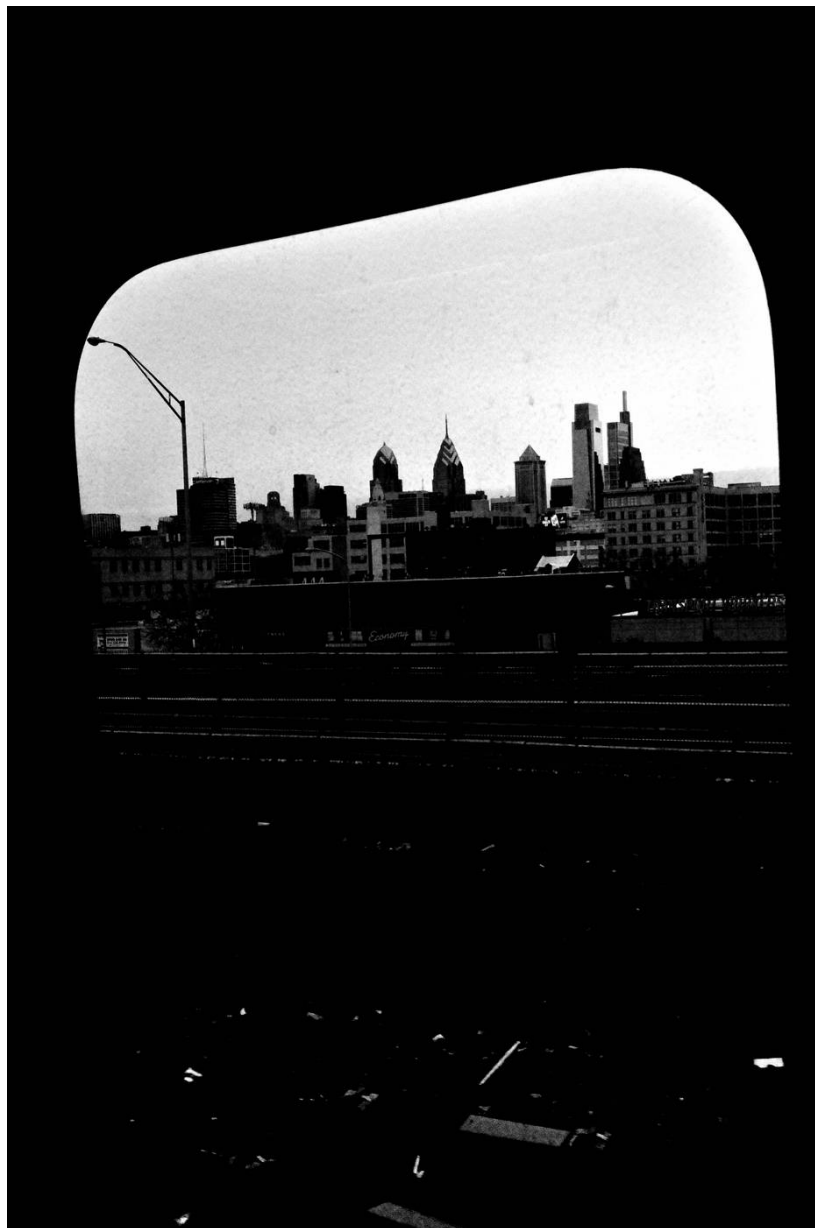


















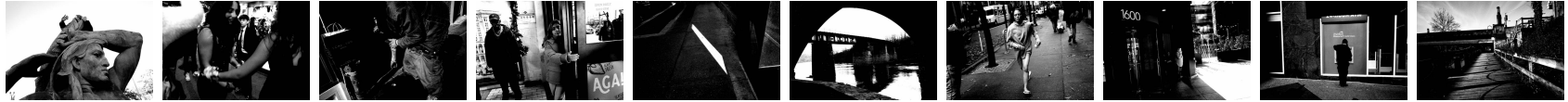








FLUX\_001 — CONTACT SHEET — 50 FRAMES



001 002 003 004 005 006 007 008 009 010



011 012 013 014 015 016 017 018 019 020



021 022 023 024 025 026 027 028 029 030



031 032 033 034 035 036 037 038 039 040



041 042 043 044 045 046 047 048 049 050

## FLUX\_001 INDEX

---

001 - 2022-11-24 10:38:53	026 - 2022-12-30 10:33:57
002 - 2022-11-26 18:18:36	027 - 2022-12-31 12:20:12
003 - 2022-12-02 11:54:35	028 - 2023-01-01 09:51:00
004 - 2022-12-05 12:35:21	029 - 2023-01-01 12:21:17
005 - 2022-12-05 13:35:36	030 - 2023-01-01 13:04:23
006 - 2022-12-05 15:38:17	031 - 2023-01-01 13:21:44
007 - 2022-12-07 13:00:24	032 - 2023-01-01 14:32:51
008 - 2022-12-09 12:32:23	033 - 2023-01-01 15:44:02
009 - 2022-12-09 12:34:01	034 - 2023-01-02 13:29:39
010 - 2022-12-10 13:15:50	035 - 2023-01-02 13:34:19
011 - 2022-12-12 11:38:43	036 - 2023-01-02 15:09:48
012 - 2022-12-17 13:09:16	037 - 2023-01-06 12:09:43
013 - 2022-12-17 13:30:50	038 - 2023-01-08 13:06:18
014 - 2022-12-17 14:26:05	039 - 2023-01-12 09:17:46
015 - 2022-12-21 11:33:34	040 - 2023-01-14 12:07:10
016 - 2022-12-21 11:46:32	041 - 2023-01-14 12:08:09
017 - 2022-12-24 17:12:39	042 - 2023-01-16 14:58:12
018 - 2022-12-24 19:15:01	043 - 2023-01-17 09:15:34
019 - 2022-12-26 13:30:36	044 - 2023-01-17 12:13:38
020 - 2022-12-26 14:12:12	045 - 2023-01-17 12:40:55
021 - 2022-12-28 14:18:33	046 - 2023-01-17 12:48:39
022 - 2022-12-29 12:58:21	047 - 2023-01-17 12:50:55
023 - 2022-12-29 13:05:01	048 - 2023-01-17 12:58:12
024 - 2022-12-29 14:15:45	049 - 2023-01-17 13:08:50
025 - 2022-12-30 10:10:21	050 - 2023-01-17 13:17:23



