

FLUX_070

2024-01-01 → 2024-01-01

Dante Sisofo

WHAT IS FLUX

FLUX is an open-source chronological photography publishing and archival system. Every 50 photographs automatically becomes a new issue.

The system generates:

- PDF publication
- contact sheet
- metadata manifest
- original JPEG files
- digital archive update

STEP_01

CAPTURE

CAMERA: compact digital camera

FILE TYPE: small JPEG

COLOR MODE: high contrast black and white

PURPOSE:

- eliminate processing
- eliminate workflow friction
- maximize speed

STEP_02

SELECT

GENERATE DIGITAL CONTACT SHEET

REVIEW SMALL THUMBNAILS ONLY

MAKE FINAL SELECTIONS
FROM CONTACT SHEET VIEW

SELECT QUICKLY

DO NOT:

- overedit
- oversequence
- overanalyze

TARGET: 50 PHOTOGRAPHS PER ISSUE

STEP_03

UPLOAD

DRAG SELECTED FILES INTO:

/FLUX_UPLOAD/

RUN:

./flux_update.command
OR: python3 flux_update.py

STEP_04

SYSTEM AUTOMATION

SYSTEM AUTOMATICALLY:

- detects new photographs
- reads timestamps
- preserves chronological order
- generates derivatives
- creates metadata
- generates SHA256 hashes
- rebuilds manifests
- updates digital archive
- rebuilds timeline
- uploads archive online

DIGITAL ARCHIVE:

flux.dantesisofo.com

ARCHIVE STRUCTURE

DIGITAL ARCHIVE INCLUDES:

- chronological timeline
- issue browser
- downloadable PDFs
- original JPEG files
- metadata manifests
- contact sheets

ALL PHOTOGRAPHS REMAIN
IN CHRONOLOGICAL ORDER

STEP_05

ISSUE GENERATION

WHEN 50 NEW PHOTOGRAPHS
ARE DETECTED:

SYSTEM AUTOMATICALLY:

- creates next FLUX issue
- sequences photographs
- preserves capture order
- generates issue number
- generates issue PDF
- updates publication archive

NO MANUAL LAYOUT REQUIRED

STEP_06

PRINT

PRINT: double sided

PAPER: 8.5 x 11 office paper

STACK PAGES

ALIGN EDGES

DO NOT FOLD

STAPLE LEFT SIDE

USING COVER MARKS

STEP_07

ARCHIVE

STORE ISSUES CHRONOLOGICALLY

PRESERVE ISSUE NUMBERS

MAKE PUBLICLY ACCESSIBLE

PRINT

DISTRIBUTE

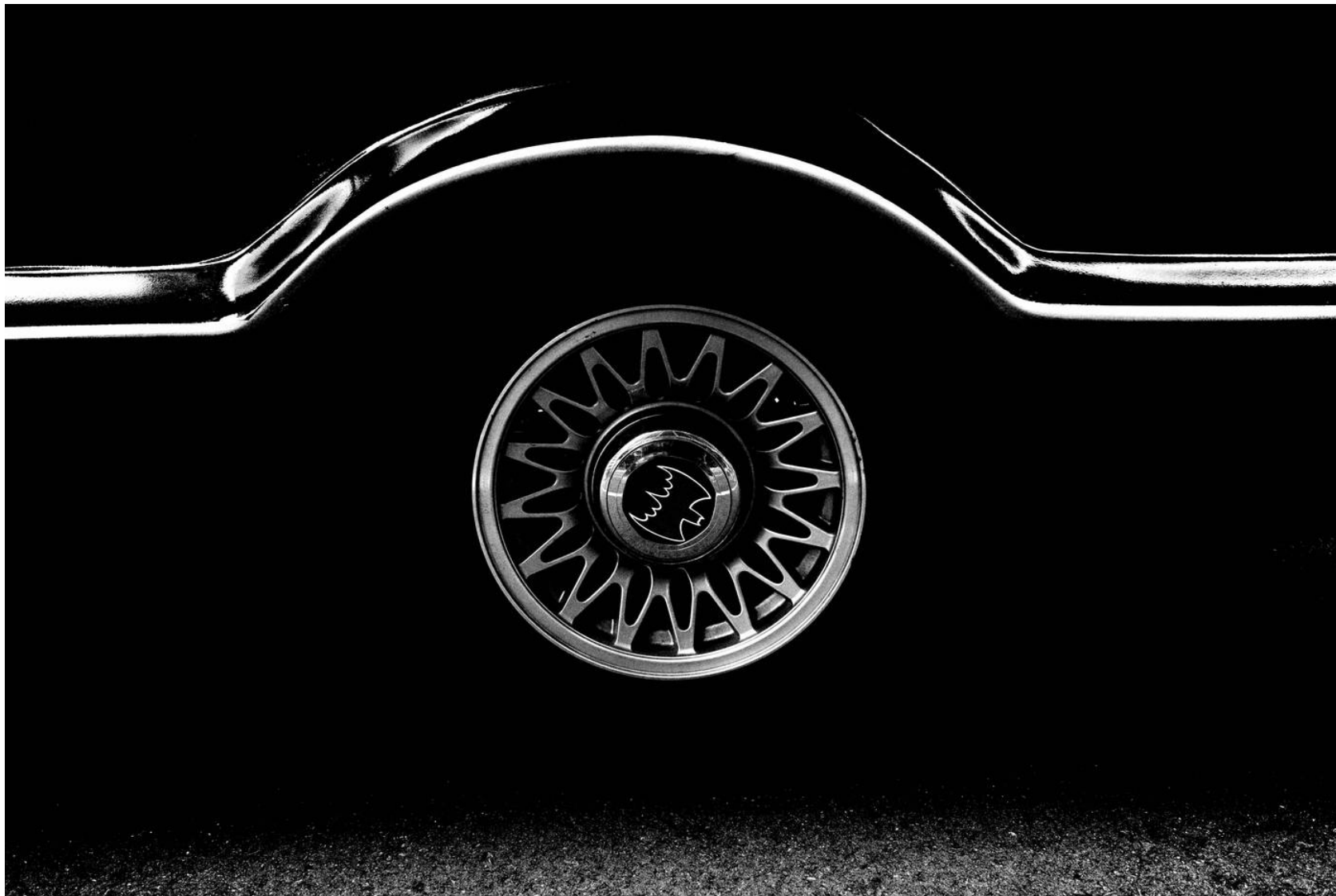
DOWNLOAD

REPRODUCE

END_OF_PROTOCOL













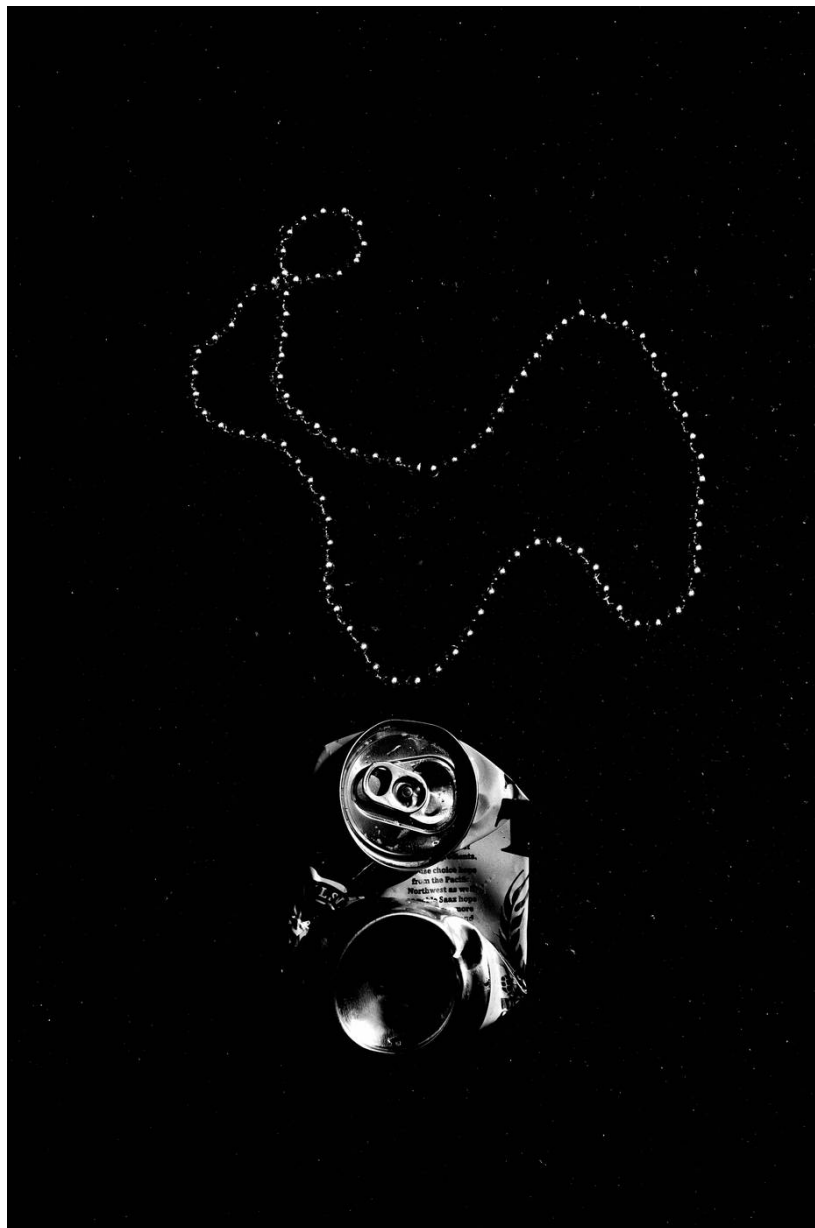


























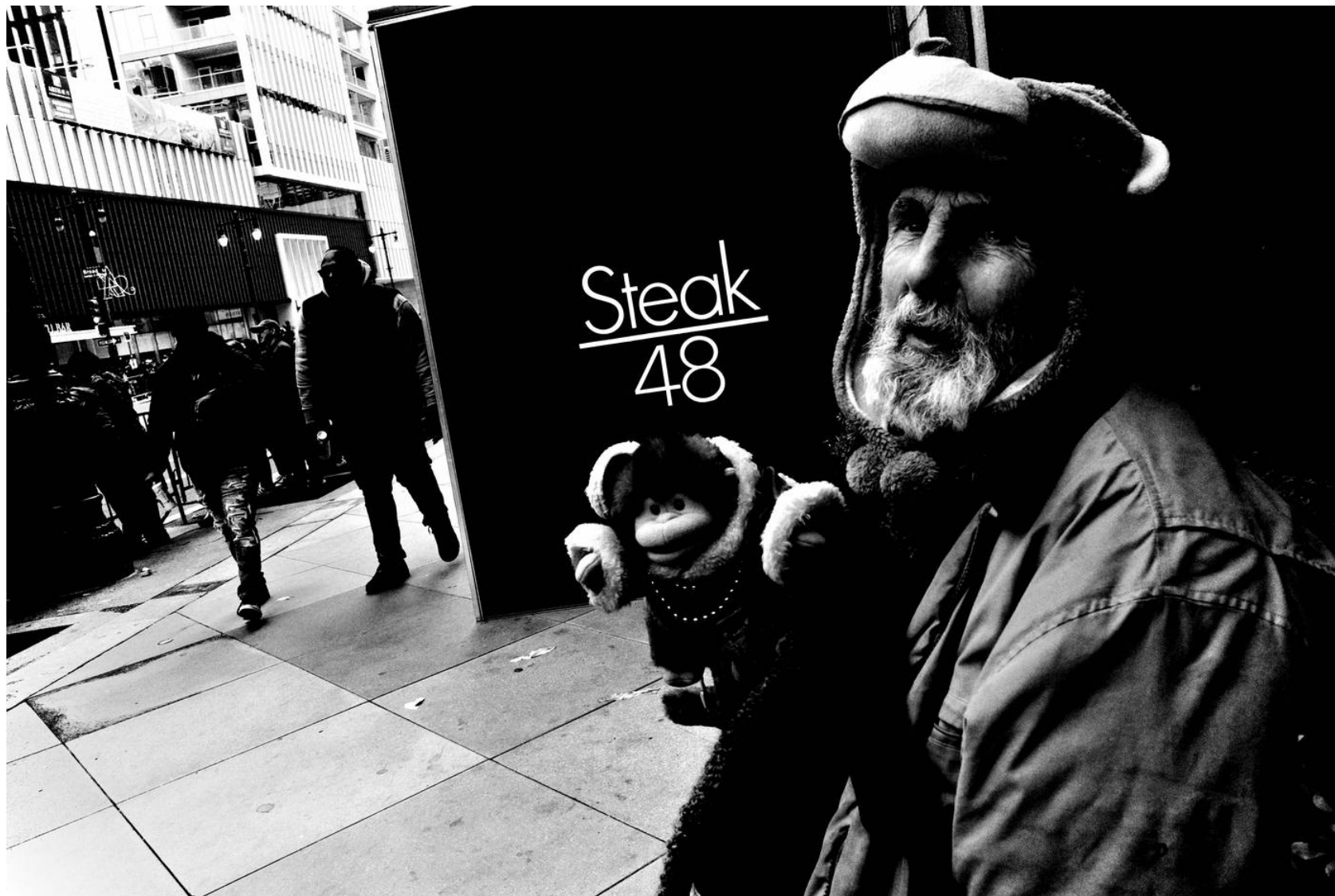






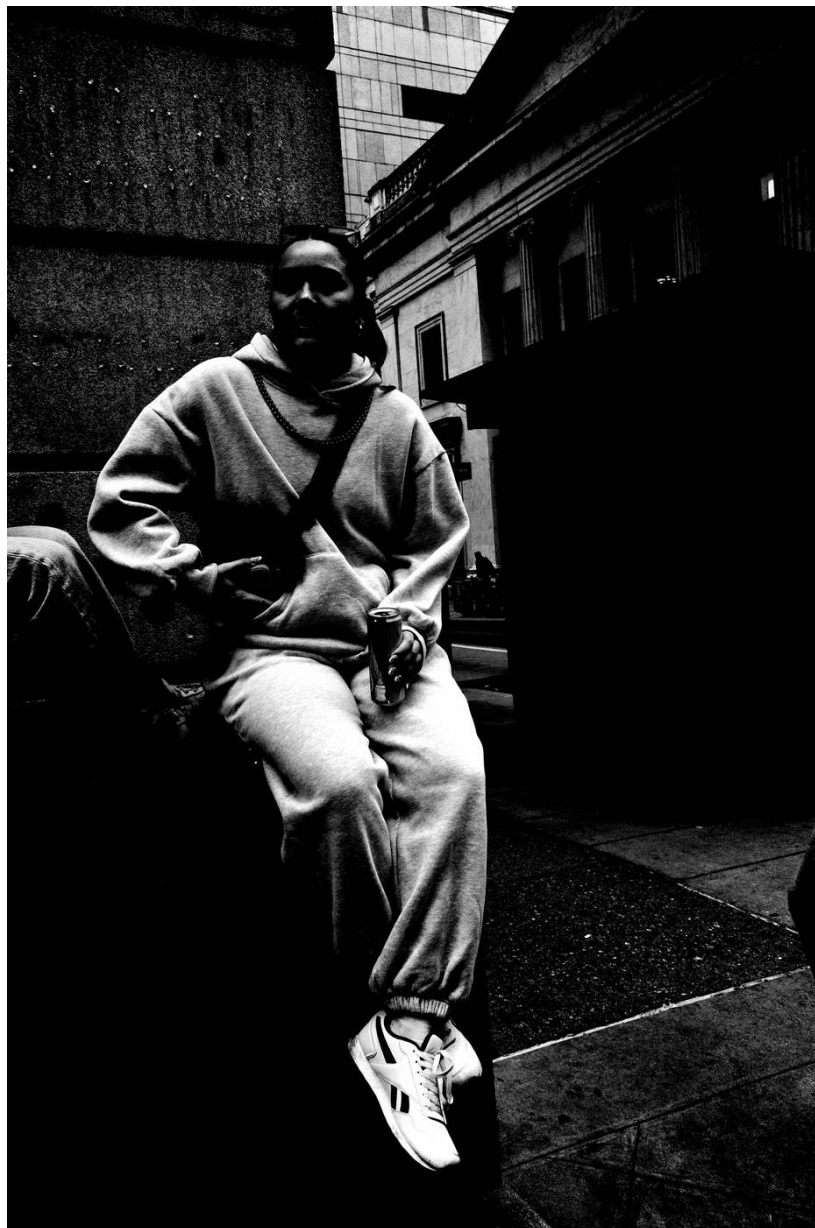








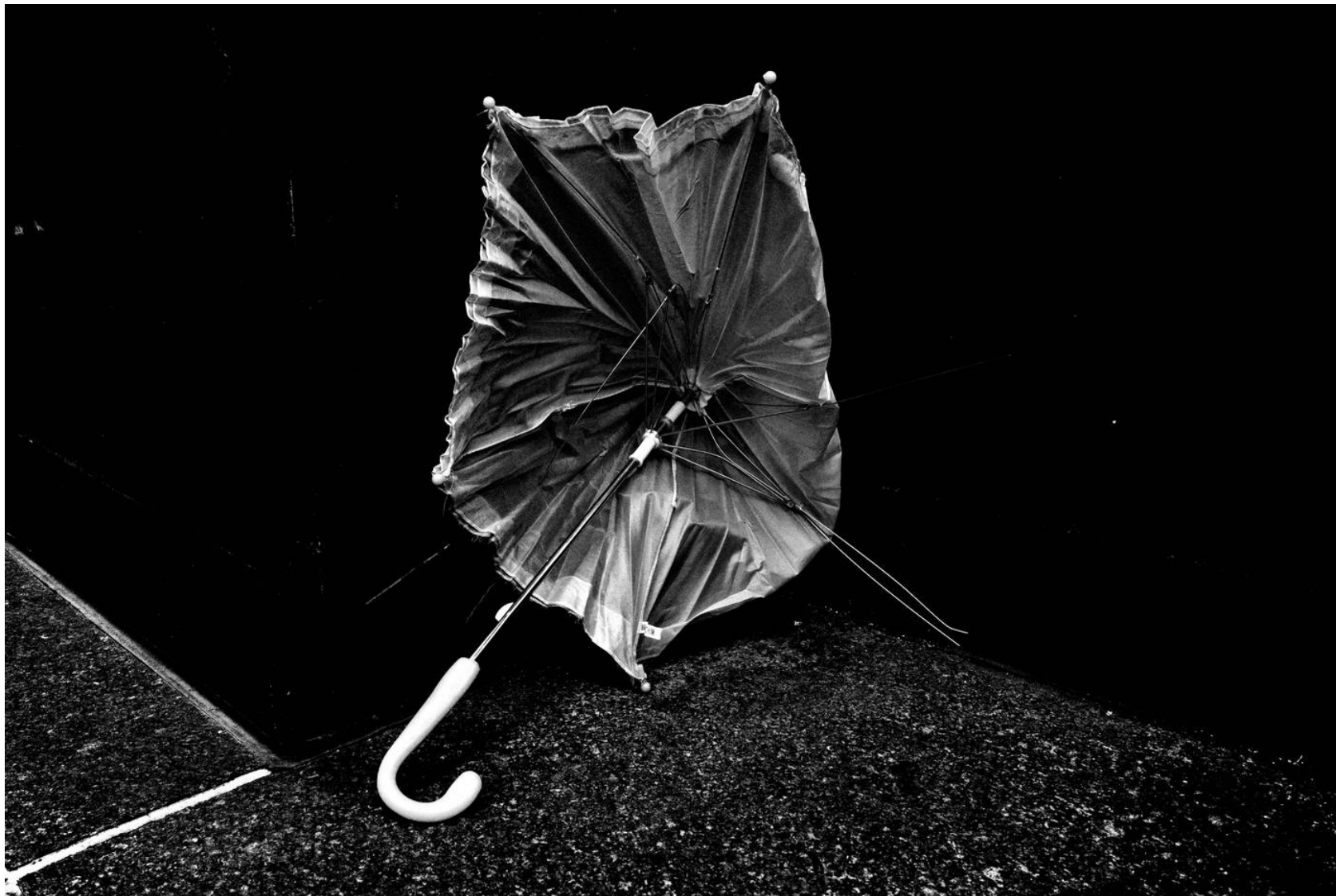














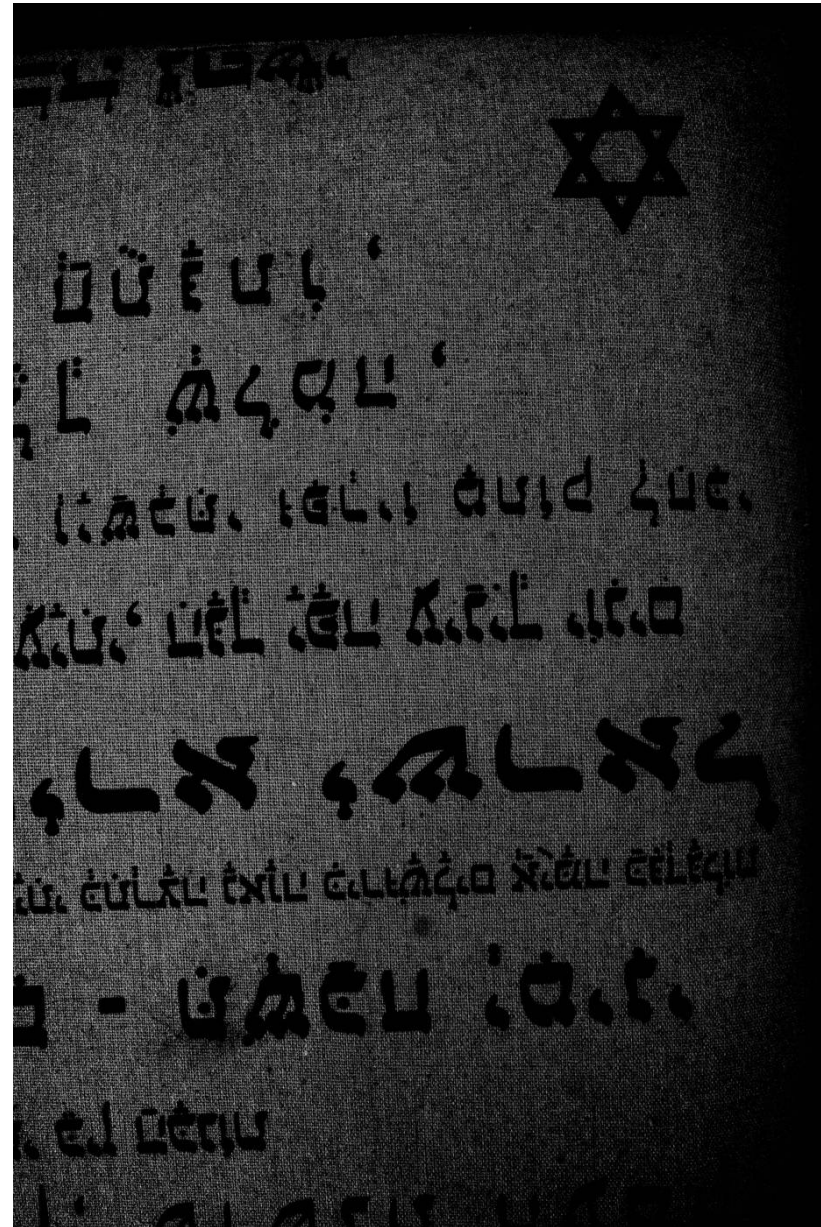










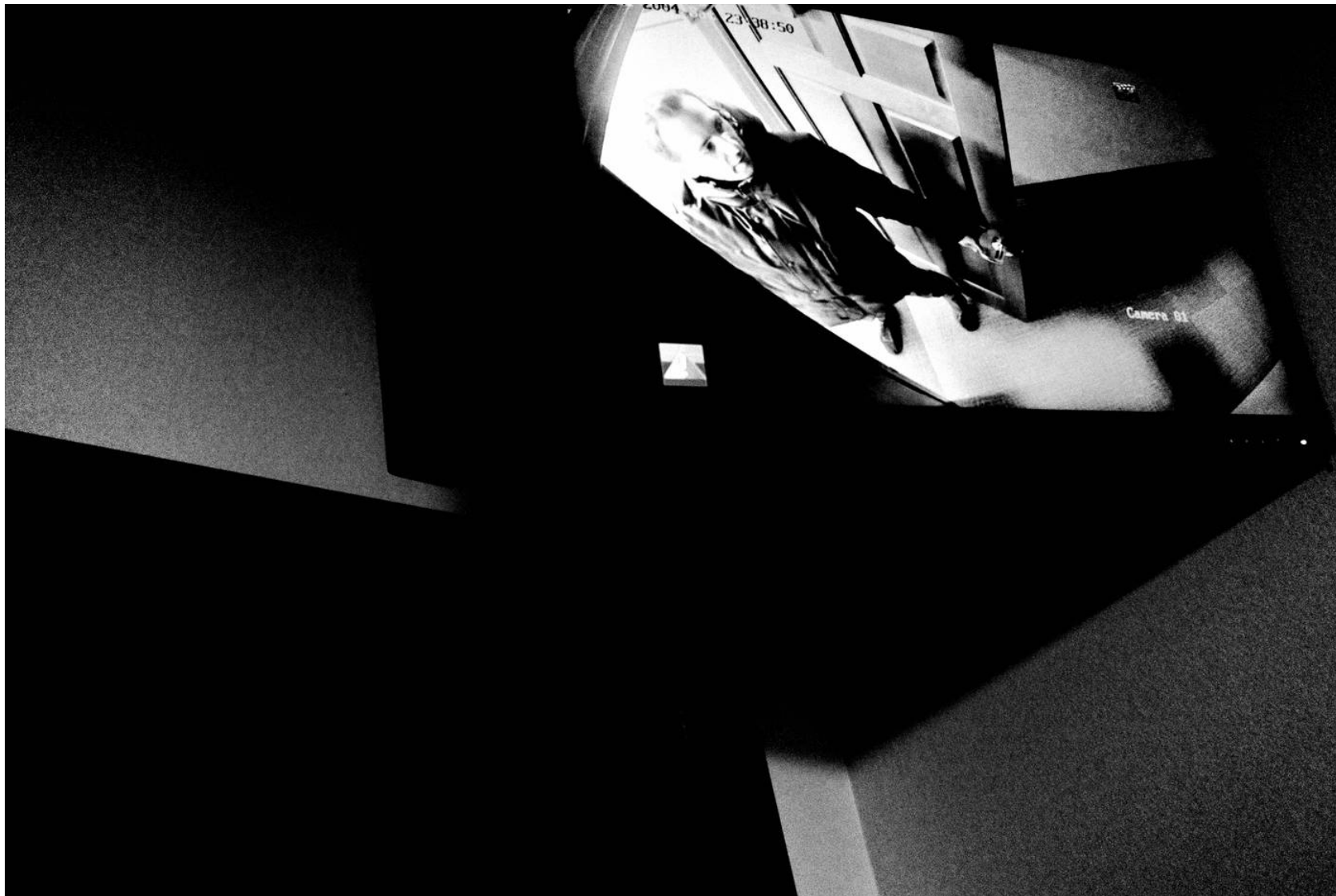




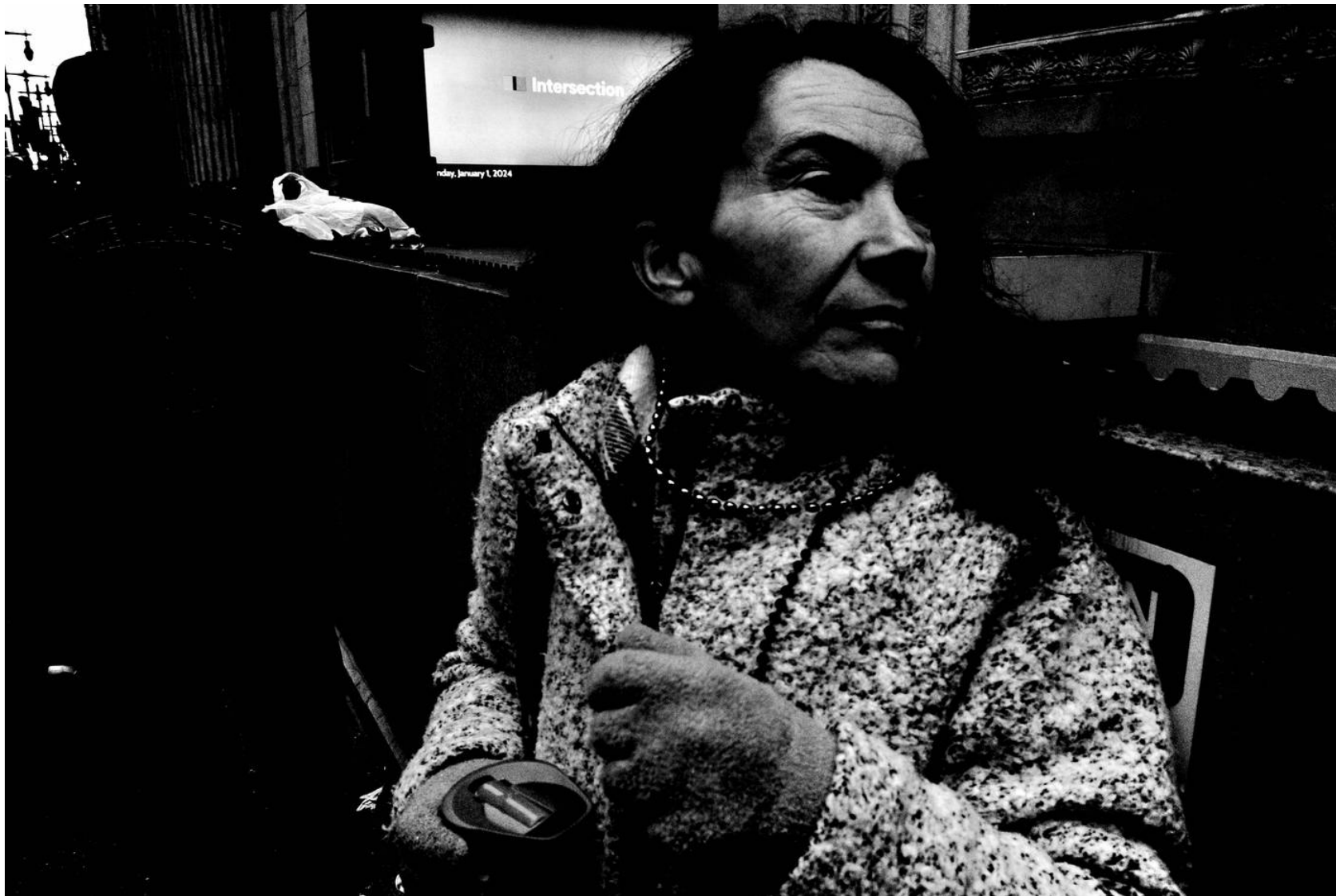








2024-01-01 15:30:48
Dante Sisofo













FLUX_070 — CONTACT SHEET — 50 FRAMES



001



002



003



004



005



006



007



008



009



010



011



012



013



014



015



016



017



018



019



020



021



022



023



024



025



026



027



028



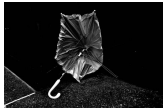
029



030



031



032



033



034



035



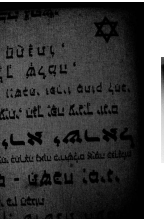
036



037



038



039



040



041



042



043



044



045



046



047



048



049



050

FLUX_070 INDEX

001	-	2024-01-01	10:54:55	026	-	2024-01-01	13:47:50
002	-	2024-01-01	11:07:15	027	-	2024-01-01	13:51:40
003	-	2024-01-01	11:59:25	028	-	2024-01-01	13:52:44
004	-	2024-01-01	12:12:31	029	-	2024-01-01	13:54:10
005	-	2024-01-01	12:14:50	030	-	2024-01-01	14:01:49
006	-	2024-01-01	12:20:09	031	-	2024-01-01	14:15:47
007	-	2024-01-01	12:24:23	032	-	2024-01-01	14:19:45
008	-	2024-01-01	12:27:37	033	-	2024-01-01	14:22:45
009	-	2024-01-01	12:29:04	034	-	2024-01-01	14:23:26
010	-	2024-01-01	12:31:17	035	-	2024-01-01	14:37:19
011	-	2024-01-01	12:32:58	036	-	2024-01-01	14:49:32
012	-	2024-01-01	12:33:57	037	-	2024-01-01	14:51:17
013	-	2024-01-01	12:34:22	038	-	2024-01-01	14:52:20
014	-	2024-01-01	12:54:51	039	-	2024-01-01	14:58:46
015	-	2024-01-01	13:08:26	040	-	2024-01-01	14:59:59
016	-	2024-01-01	13:10:00	041	-	2024-01-01	15:04:26
017	-	2024-01-01	13:12:14	042	-	2024-01-01	15:25:38
018	-	2024-01-01	13:13:30	043	-	2024-01-01	15:30:07
019	-	2024-01-01	13:18:06	044	-	2024-01-01	15:30:48
020	-	2024-01-01	13:19:35	045	-	2024-01-01	15:40:13
021	-	2024-01-01	13:23:27	046	-	2024-01-01	16:04:42
022	-	2024-01-01	13:25:28	047	-	2024-01-01	16:06:39
023	-	2024-01-01	13:34:17	048	-	2024-01-01	16:08:50
024	-	2024-01-01	13:35:53	049	-	2024-01-01	16:09:45
025	-	2024-01-01	13:42:46	050	-	2024-01-01	16:15:46



