

FLUX_080

2024-01-13 → 2024-01-15

Dante Sisofo

WHAT IS FLUX

FLUX is an open-source chronological photography publishing and archival system. Every 50 photographs automatically becomes a new issue.

The system generates:

- PDF publication
- contact sheet
- metadata manifest
- original JPEG files
- digital archive update

STEP_01

CAPTURE

CAMERA: compact digital camera

FILE TYPE: small JPEG

COLOR MODE: high contrast black and white

PURPOSE:

- eliminate processing
- eliminate workflow friction
- maximize speed

STEP_02

SELECT

GENERATE DIGITAL CONTACT SHEET

REVIEW SMALL THUMBNAILS ONLY

MAKE FINAL SELECTIONS
FROM CONTACT SHEET VIEW

SELECT QUICKLY

DO NOT:

- overedit
- oversequence
- overanalyze

TARGET: 50 PHOTOGRAPHS PER ISSUE

STEP_03

UPLOAD

DRAG SELECTED FILES INTO:

/FLUX_UPLOAD/

RUN:

./flux_update.command
OR: python3 flux_update.py

STEP_04

SYSTEM AUTOMATION

SYSTEM AUTOMATICALLY:

- detects new photographs
- reads timestamps
- preserves chronological order
- generates derivatives
- creates metadata
- generates SHA256 hashes
- rebuilds manifests
- updates digital archive
- rebuilds timeline
- uploads archive online

DIGITAL ARCHIVE:

flux.dantesisofo.com

ARCHIVE STRUCTURE

DIGITAL ARCHIVE INCLUDES:

- chronological timeline
- issue browser
- downloadable PDFs
- original JPEG files
- metadata manifests
- contact sheets

ALL PHOTOGRAPHS REMAIN
IN CHRONOLOGICAL ORDER

STEP_05

ISSUE GENERATION

WHEN 50 NEW PHOTOGRAPHS
ARE DETECTED:

SYSTEM AUTOMATICALLY:

- creates next FLUX issue
- sequences photographs
- preserves capture order
- generates issue number
- generates issue PDF
- updates publication archive

NO MANUAL LAYOUT REQUIRED

STEP_06

PRINT

PRINT: double sided

PAPER: 8.5 x 11 office paper

STACK PAGES

ALIGN EDGES

DO NOT FOLD

STAPLE LEFT SIDE

USING COVER MARKS

STEP_07

ARCHIVE

STORE ISSUES CHRONOLOGICALLY

PRESERVE ISSUE NUMBERS

MAKE PUBLICLY ACCESSIBLE

PRINT

DISTRIBUTE

DOWNLOAD

REPRODUCE

END_OF_PROTOCOL





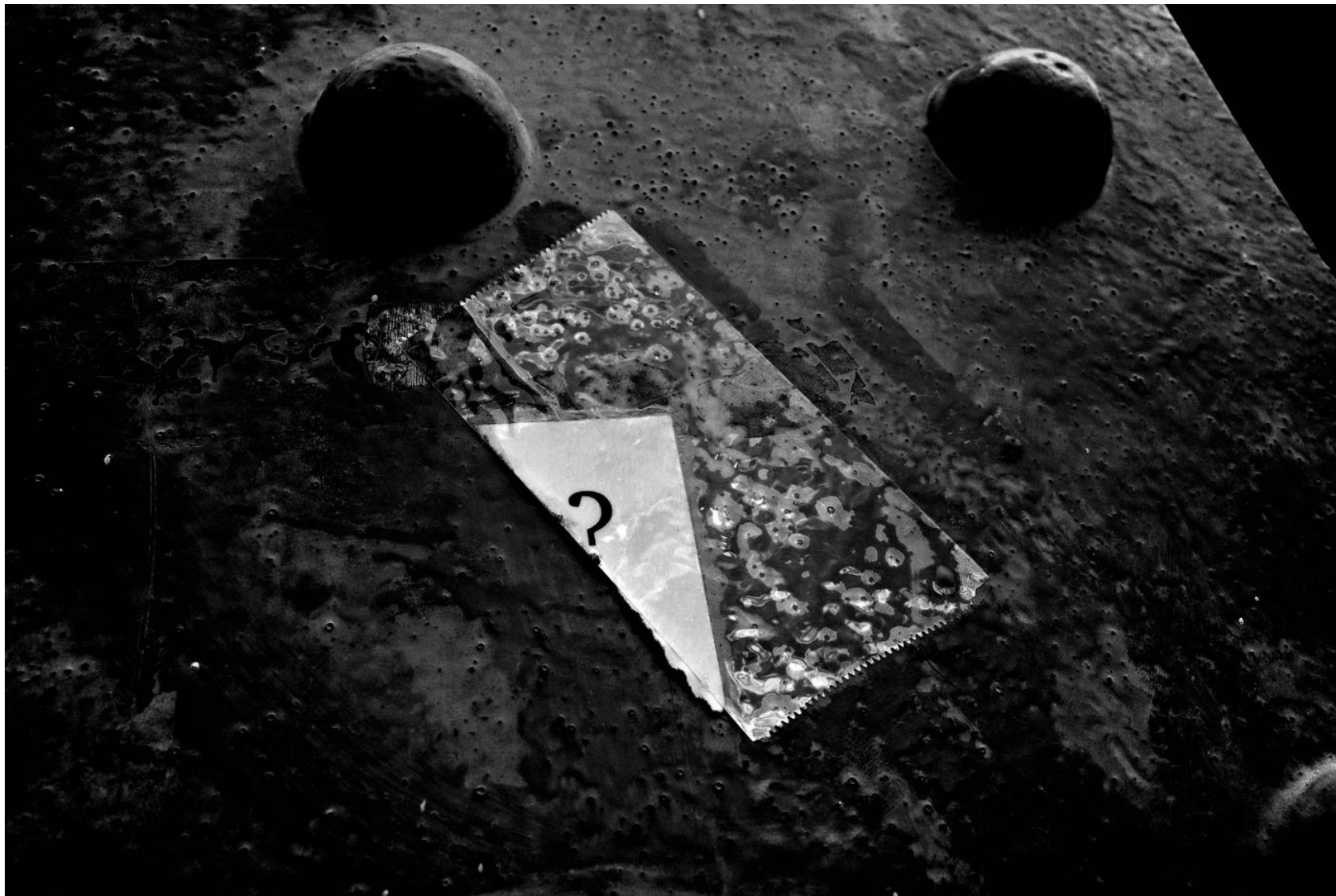








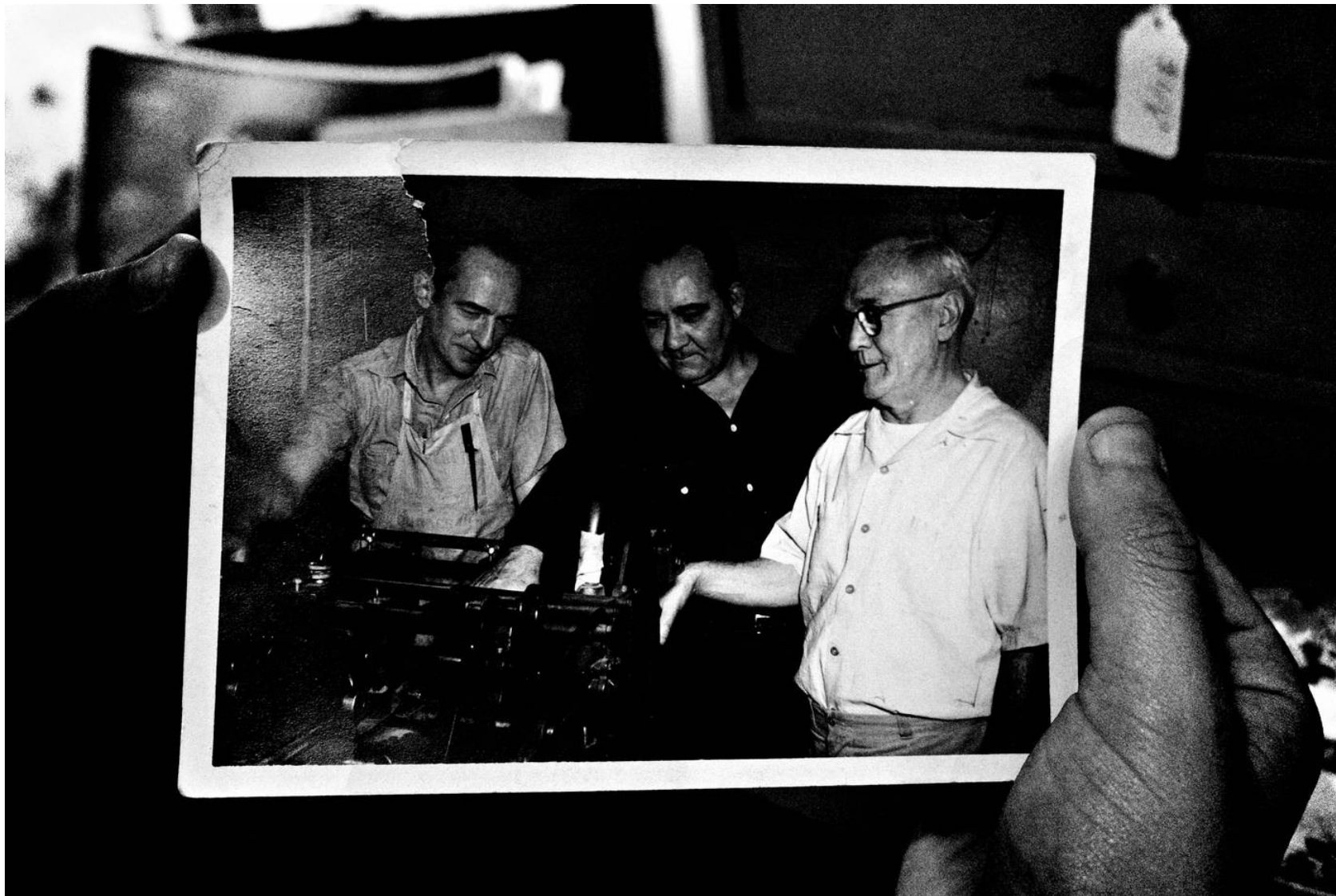












40TH ANNIVERSARY CLEARANCE SALE

BURKE & JAMES, Inc., 40TH ANNIVERSARY CLEARANCE SALE

GENERAL PHOTOGRAPHIC WORK

ANASTIGMAT LENSES (Continued from Page 38)

EASTMAN Anastigmat Lenses



20 IN. FOCUS - F:6 SPEED

The degree of correction attained in these lenses is of such a high order that they are recommended for scientific work such as aerial surveying—plan and map work—and for all difficult types of commercial and portrait work where extreme accuracy is essential. They are mounted in barrels of compact construction—suitable for use in aerial cameras, etc.

A RARE VALUE

Dealers that specialize in large field and shoulder portraits will find these lenses ideal for their perfect negatives. Also for all types of large work. The total weight of 20 inch portraits that can be covering deep lens to 11x14 inches with perfect perspective. In barrel comes with iris diaphragm.

Order by No. 38214
NET EACH **\$69.50**

15 inch (375mm.) F:7.7
KALORAT QUARTZ LENS
In barrel with iris diaphragm
cover 10x12 inches.
Price each.....\$84.50

13 inch (320mm.) F:8.5
ROSS ANASTIGMAT
In barrel, covers 10x12 inches.
Price each.....\$87.50

15 inch (380mm.) F:7.5
TURNER-REICH ANASTIGMAT
Convertible lens in focus register with speeds of 7 to 1/200th second also in and 30 inch focus, covers 11x14 in.
Price each.....\$134.50

15 1/2 inch (400mm.) F:11.8
BAUSCH & LOMB PROTAR V
In barrel, covers 10x12 inches.
Price each.....\$67.50

15 1/2 inch (400mm.) F:4.5
BAUSCH & LOMB TESSAR Ic
In barrel, covers 11x14 inches.
Price each.....\$149.50

15 1/2 inch (390mm.) F:6.8
STEINHEIL ANASTIGMAT
In barrel with iris diaphragm, covers 10x12 inches.
Price each.....\$79.50

16 inch (405mm.) F:10
HOLLANDIA PROCESS LENS
In barrel, covers 10x12 inches.
Price each.....\$89.50

16 inch (405mm.) F:5.6
PORTRAIT ANASTIGMAT
In barrel with iris diaphragm, covers 10x12 inches.
Price each.....\$119.50

16 1/2 inch (420mm.) F:4.4
RODENSTOCK ANASTIGMAT
In barrel with iris diaphragm, will cover 10x12 inches.
Price each.....\$129.50

16 1/2 inch (420mm.) F:4.5
SCHNEIDER XENAR
Tessar type lens, in barrel, covers 10x12 inches.
Price each.....\$169.50

16 1/2 inch (420mm.) F:4.5
VOIGTLANDER HELIAR
In barrel, covers 10x12 inches.
Price each.....\$174.50

17 inch (450mm.) F:7.2
CARL ZEISS ANASTIGMAT
In barrel, covers 11x14 inches.
Price each.....\$94.50

17 inch (450mm.) F:6.8
GUNDLACH ANASTIGMAT
In barrel, covers 11x14 inches.
Price each.....\$69.50

18 inch (450mm.) F:8
COOKE PROCESS SERIES V
In barrel, covers 12x15 inches.
Price each.....\$119.50

18 inch (450mm.) F:8
LEY APOCHROMAT PROCESS
Anastigmat lens, corrected for three colors, covers 11x14 inches.
Price each.....\$99.50

18 inch (450mm.) F:9
HUGO MEYER PROCESS LENS
Plumat Process for reproduction, color corrected, in barrel, will cover 10x12 inches.
Price each.....\$179.50

18 inch (450mm.) F:10
LEICA PROCESS
In barrel, covers 10x12 inches.
Price each.....\$119.50

24 inch (600mm.) F:7.7
GOERZ DAGOR SERIES III
New. In barrel, covers 16x24 inches.
Price each.....\$285.00

24 inch (600mm.) F:11
GOERZ PROCESS SERIES IV
In barrel, covers 16x24 inches.
Price each.....\$179.50

24 inch (600mm.) F:15
GOERZ PROCESS SERIES IV
In barrel, covers 16x24 inches.
Price each.....\$149.50

24 inch (600mm.) F:9
TURNER-REICH PROCESS V
In barrel, covers 16x24 inches.
Price each.....\$149.50

24 inch (600mm.) F:9
TURNER-REICH PROCESS V
In barrel, covers 16x24 inches.
Price each.....\$149.50

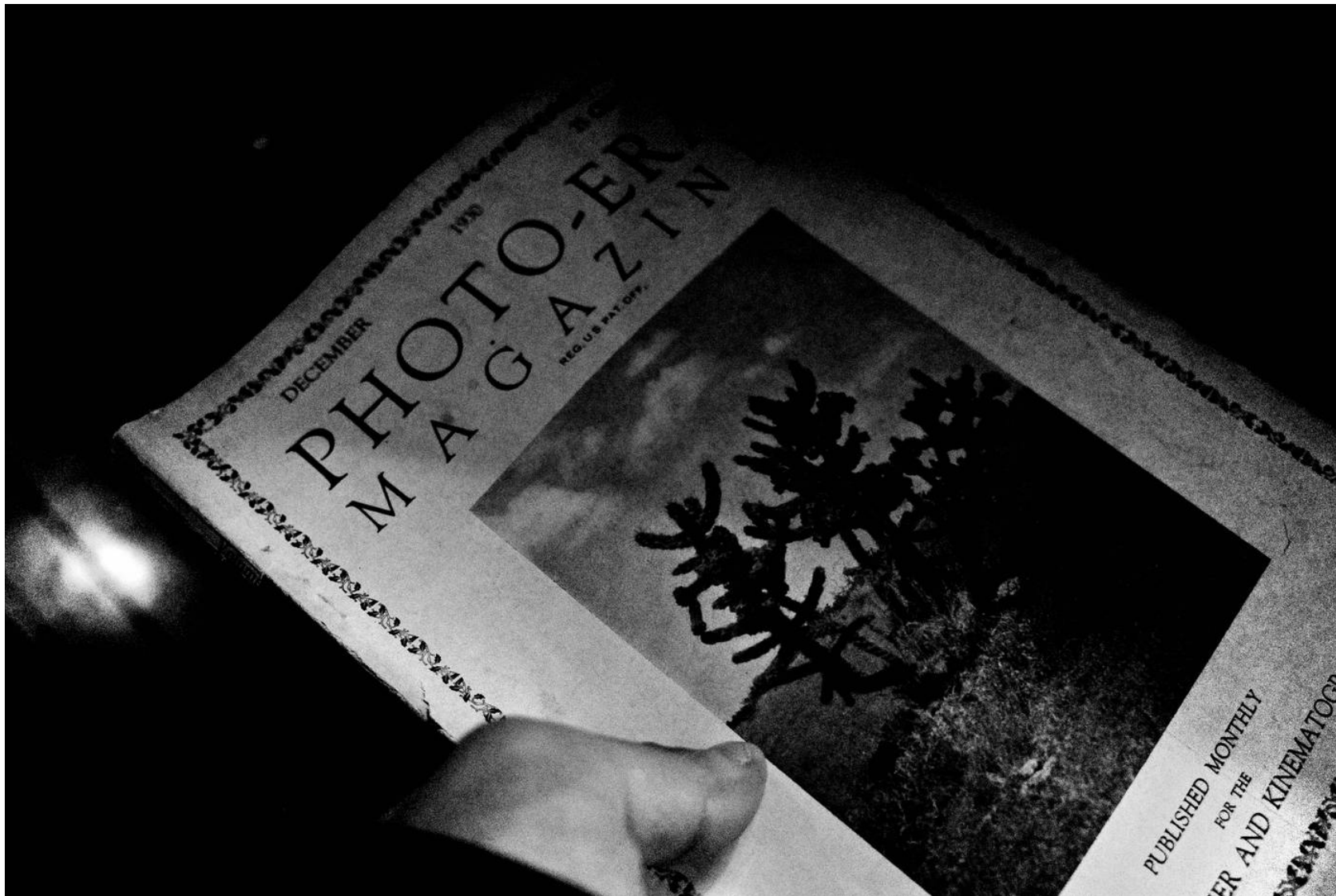
24 inch (600mm.) F:9
TURNER-REICH PROCESS V
In barrel, covers 16x24 inches.
Price each.....\$149.50

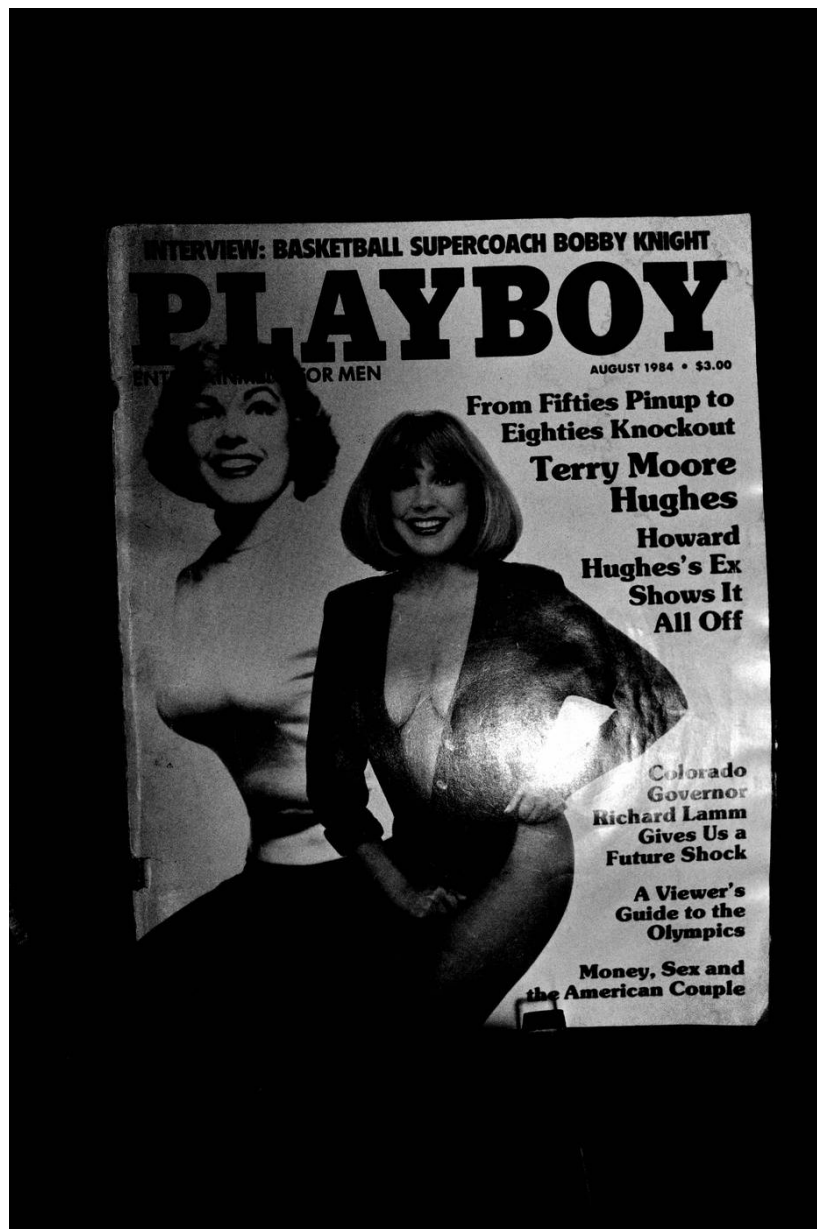
24 inch (600mm.) F:9
VOIGTLANDER HELIAR
In barrel, covers 16x24 inches.
Price each.....\$149.50

24 inch (600mm.) F:9
CARL ZEISS ANASTIGMAT
Process lens in barrel, covers 16x24 inches.
Price each.....\$149.50

25 inch (625mm.) F:11
A. S. L. OPTIC SERIES III
In barrel, covers 16x24 inches.
Price each.....\$149.50















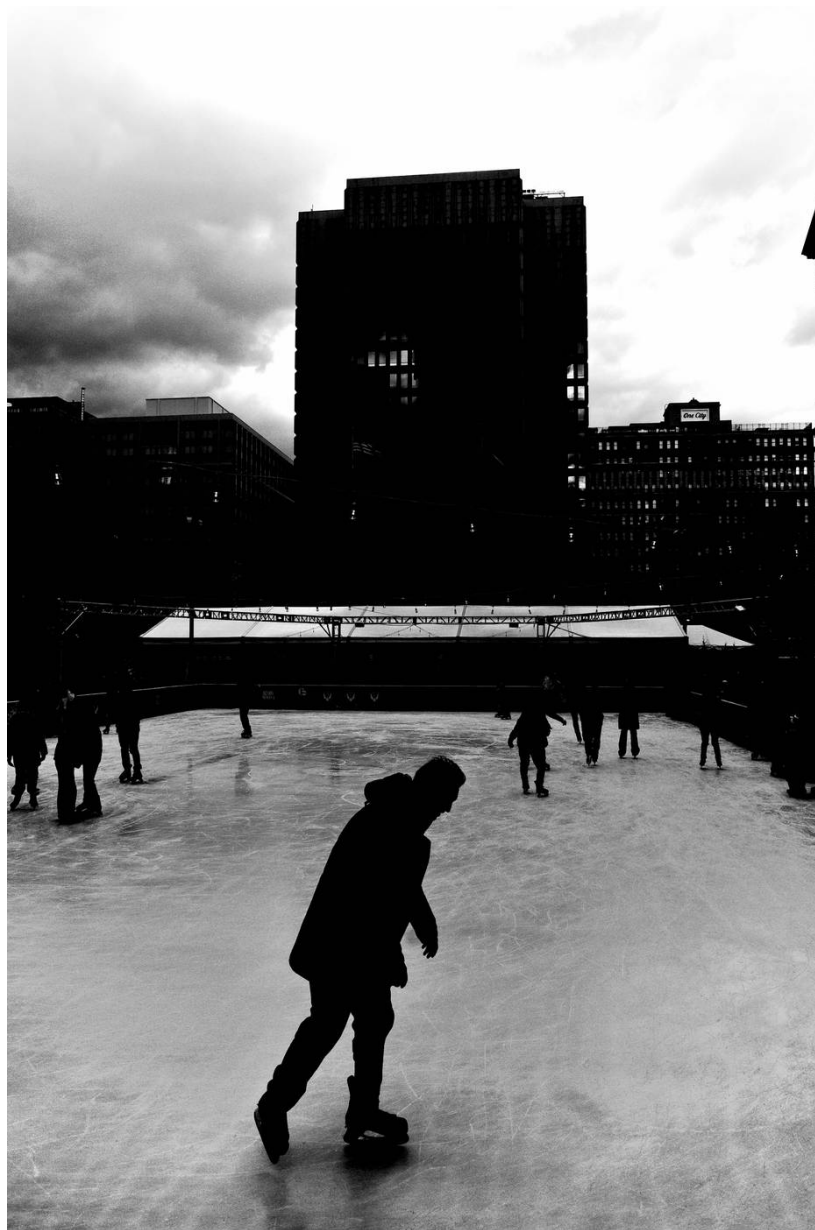






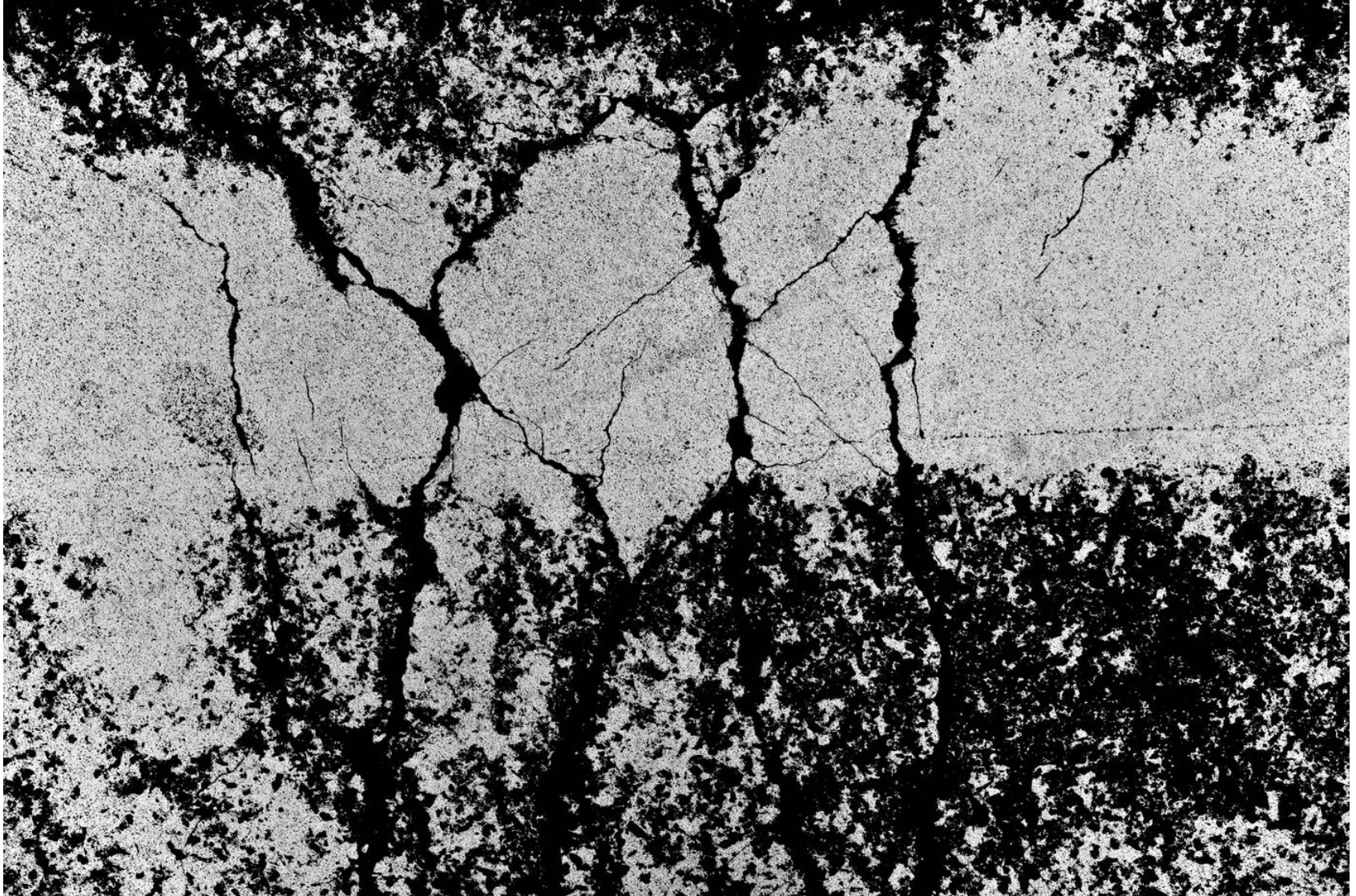




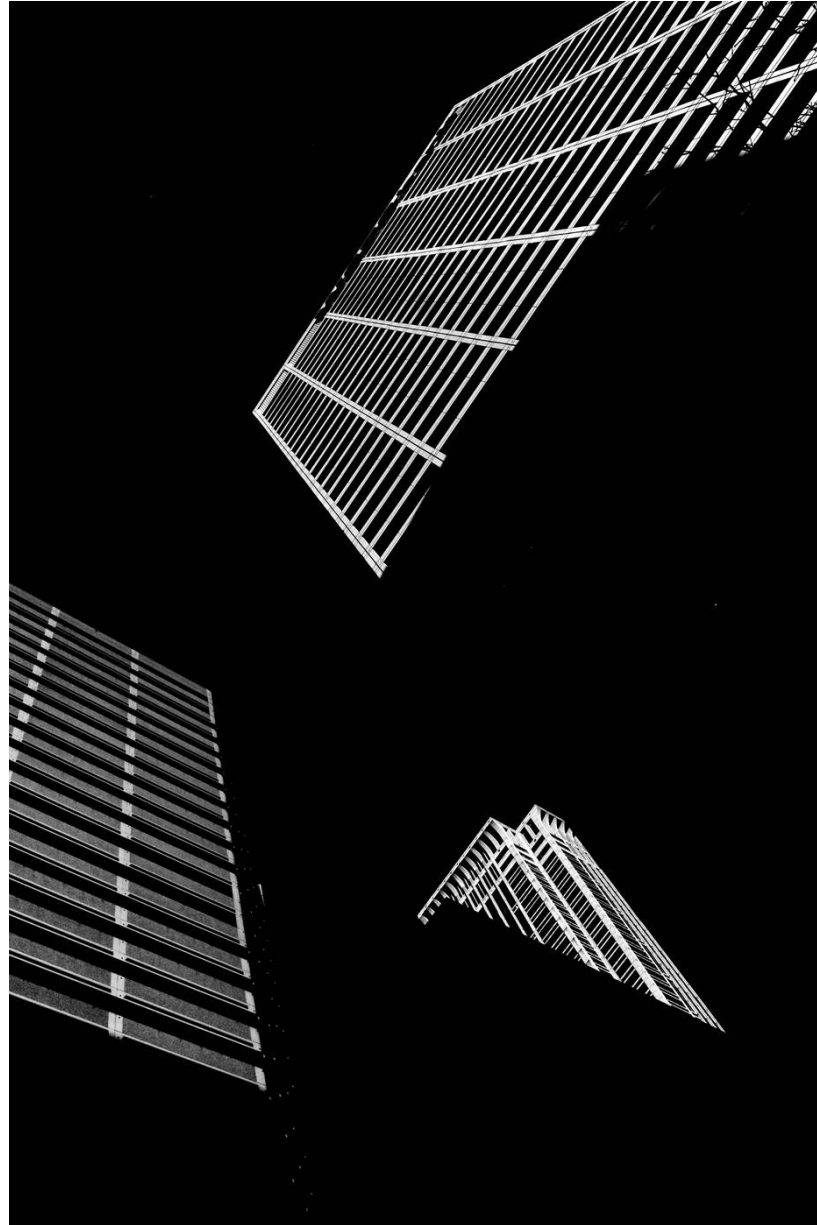






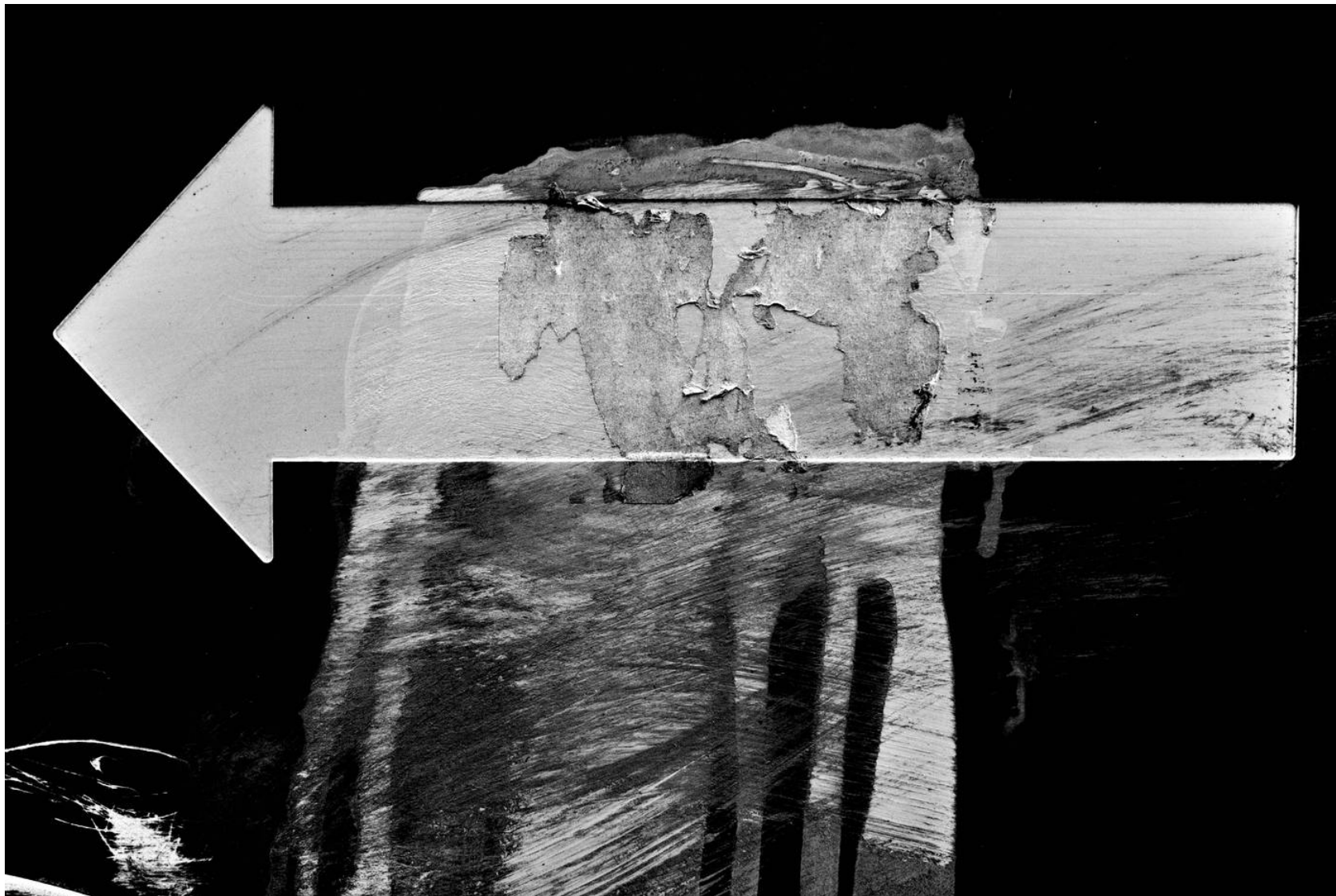




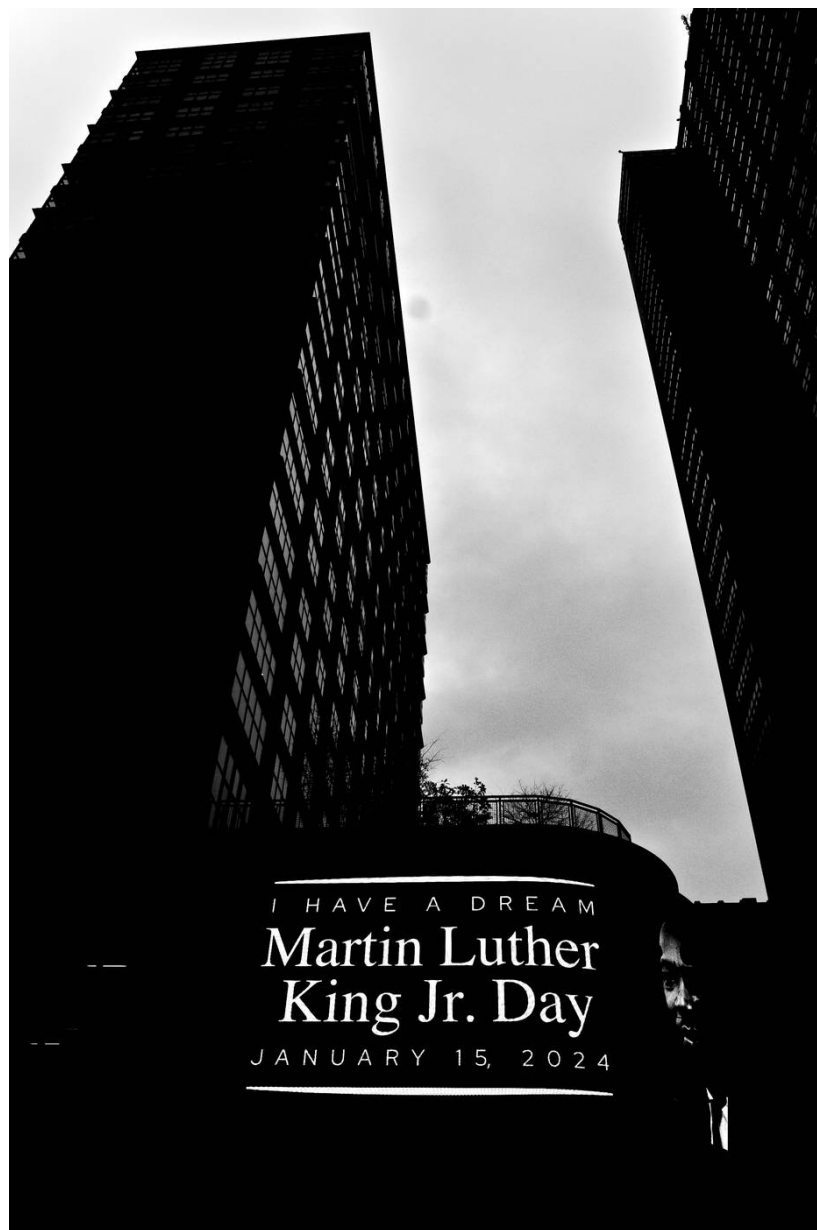
























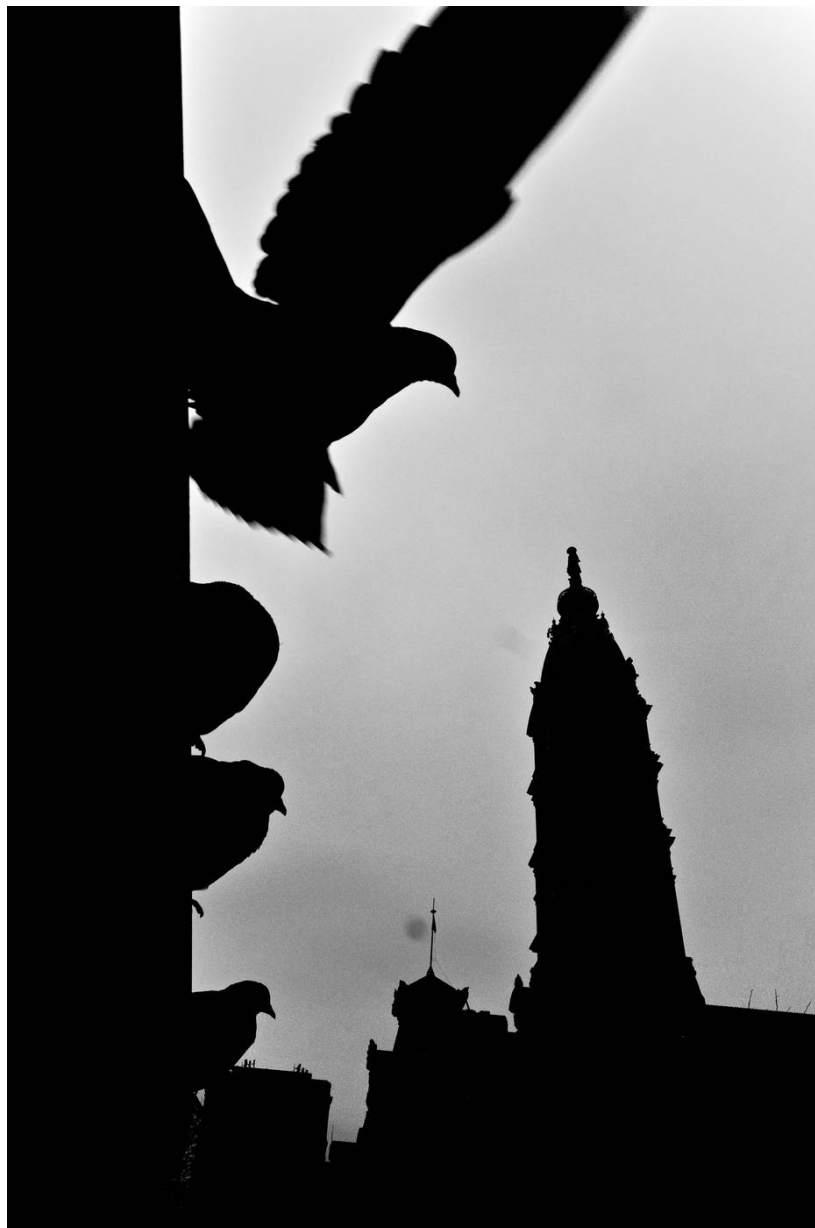


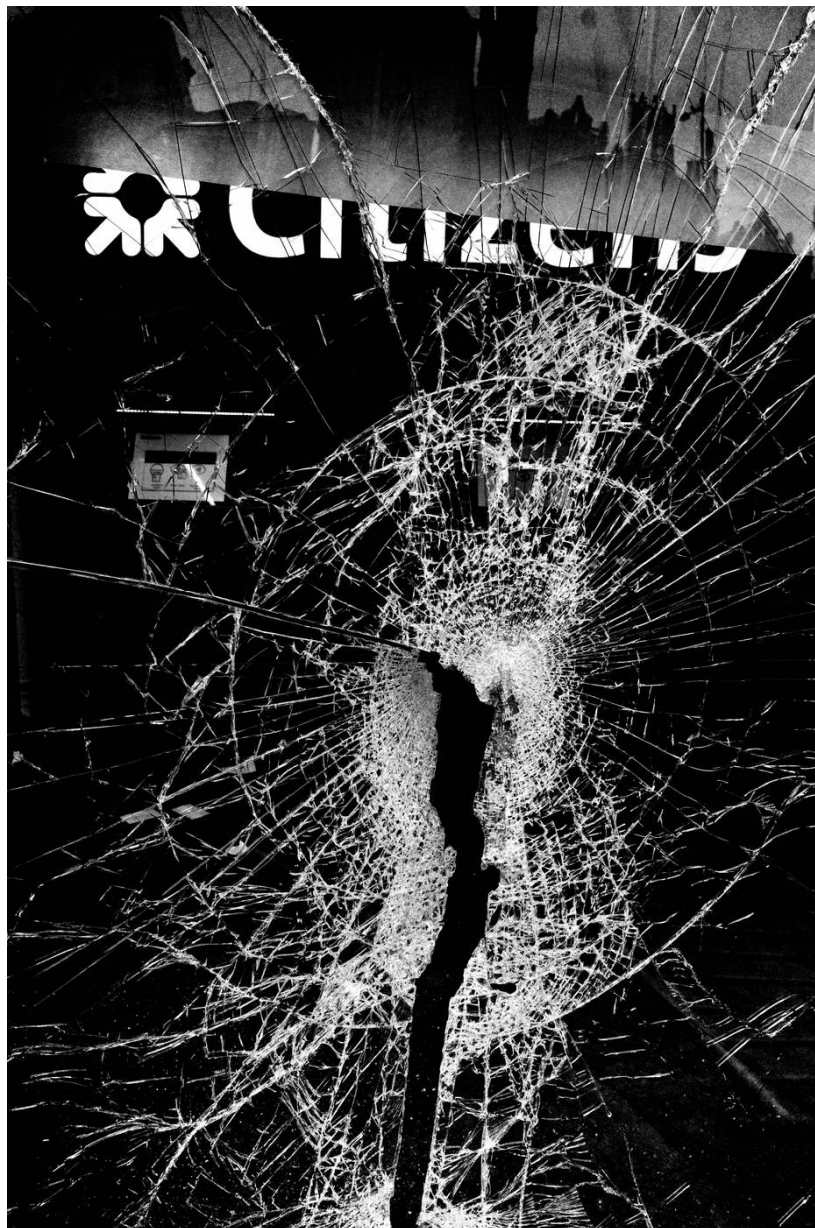


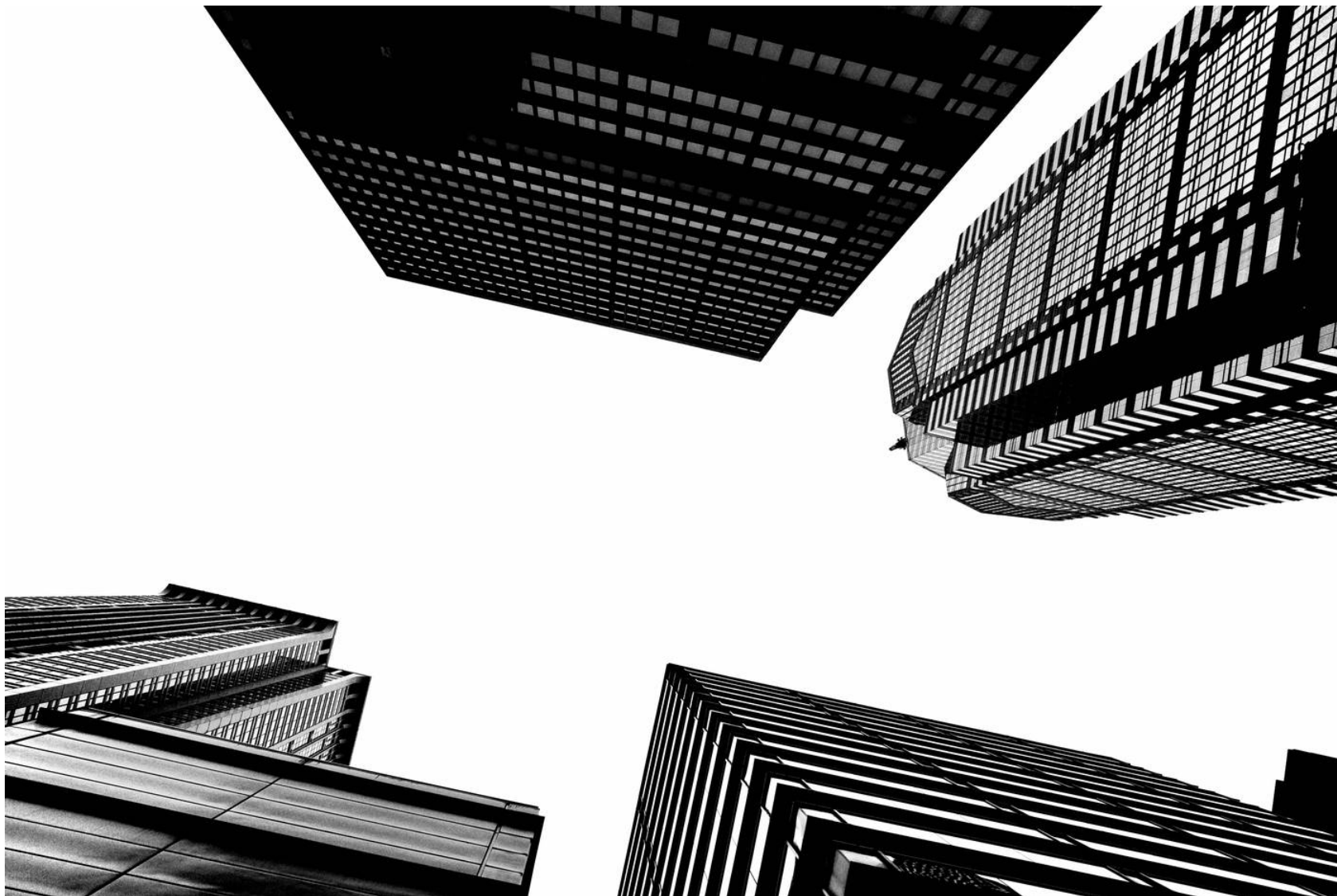












FLUX_080 — CONTACT SHEET — 50 FRAMES



001



002



003



004



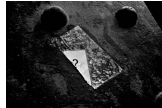
005



006



007



008



009



010



011



012



013



014



015



016



017



018



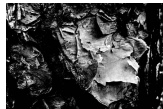
019



020



021



022



023



024



025



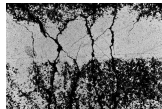
026



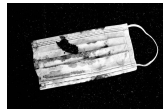
027



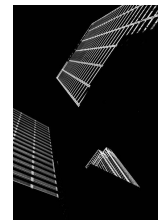
028



029



030



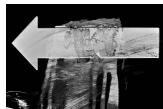
031



032



033



034



035



036



037



038



039



040



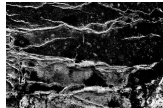
041



042



043



044



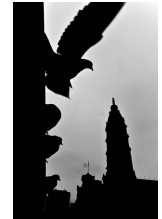
045



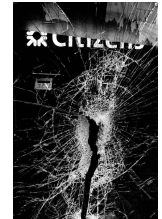
046



047



048



049



050

FLUX_080 INDEX

001	-	2024-01-13	11:39:16	026	-	2024-01-14	12:58:37
002	-	2024-01-13	11:42:52	027	-	2024-01-14	13:06:26
003	-	2024-01-13	11:50:20	028	-	2024-01-14	14:59:02
004	-	2024-01-13	13:53:00	029	-	2024-01-14	16:15:35
005	-	2024-01-13	14:05:40	030	-	2024-01-14	16:16:17
006	-	2024-01-13	14:07:11	031	-	2024-01-14	16:17:36
007	-	2024-01-13	14:11:30	032	-	2024-01-14	16:36:09
008	-	2024-01-13	14:12:39	033	-	2024-01-14	16:39:44
009	-	2024-01-13	14:15:06	034	-	2024-01-14	16:54:47
010	-	2024-01-13	16:04:23	035	-	2024-01-15	09:50:46
011	-	2024-01-13	16:06:21	036	-	2024-01-15	10:00:34
012	-	2024-01-13	16:14:35	037	-	2024-01-15	10:11:56
013	-	2024-01-13	16:15:34	038	-	2024-01-15	10:15:06
014	-	2024-01-13	16:18:15	039	-	2024-01-15	10:35:59
015	-	2024-01-13	16:22:19	040	-	2024-01-15	10:36:08
016	-	2024-01-13	16:24:19	041	-	2024-01-15	10:39:43
017	-	2024-01-13	16:31:28	042	-	2024-01-15	10:44:18
018	-	2024-01-13	16:40:05	043	-	2024-01-15	10:47:08
019	-	2024-01-13	16:48:14	044	-	2024-01-15	10:51:58
020	-	2024-01-14	10:27:58	045	-	2024-01-15	10:54:16
021	-	2024-01-14	10:28:23	046	-	2024-01-15	11:49:43
022	-	2024-01-14	10:29:52	047	-	2024-01-15	12:45:02
023	-	2024-01-14	10:45:44	048	-	2024-01-15	13:18:32
024	-	2024-01-14	11:04:30	049	-	2024-01-15	13:20:43
025	-	2024-01-14	12:36:38	050	-	2024-01-15	13:26:12



