

FLUX_128

2024-07-20 → 2024-07-22

Dante Sisofo

WHAT IS FLUX

FLUX is an open-source chronological photography publishing and archival system. Every 50 photographs automatically becomes a new issue.

The system generates:

- PDF publication
- contact sheet
- metadata manifest
- original JPEG files
- digital archive update

STEP_01

CAPTURE

CAMERA: compact digital camera

FILE TYPE: small JPEG

COLOR MODE: high contrast black and white

PURPOSE:

- eliminate processing
- eliminate workflow friction
- maximize speed

STEP_02

SELECT

GENERATE DIGITAL CONTACT SHEET

REVIEW SMALL THUMBNAILS ONLY

MAKE FINAL SELECTIONS
FROM CONTACT SHEET VIEW

SELECT QUICKLY

DO NOT:

- overedit
- oversequence
- overanalyze

TARGET: 50 PHOTOGRAPHS PER ISSUE

STEP_03

UPLOAD

DRAG SELECTED FILES INTO:

/FLUX_UPLOAD/

RUN:

./flux_update.command
OR: python3 flux_update.py

STEP_04

SYSTEM AUTOMATION

SYSTEM AUTOMATICALLY:

- detects new photographs
- reads timestamps
- preserves chronological order
- generates derivatives
- creates metadata
- generates SHA256 hashes
- rebuilds manifests
- updates digital archive
- rebuilds timeline
- uploads archive online

DIGITAL ARCHIVE:

flux.dantesisofo.com

ARCHIVE STRUCTURE

DIGITAL ARCHIVE INCLUDES:

- chronological timeline
- issue browser
- downloadable PDFs
- original JPEG files
- metadata manifests
- contact sheets

ALL PHOTOGRAPHS REMAIN
IN CHRONOLOGICAL ORDER

STEP_05

ISSUE GENERATION

WHEN 50 NEW PHOTOGRAPHS
ARE DETECTED:

SYSTEM AUTOMATICALLY:

- creates next FLUX issue
- sequences photographs
- preserves capture order
- generates issue number
- generates issue PDF
- updates publication archive

NO MANUAL LAYOUT REQUIRED

STEP_06

PRINT

PRINT: double sided

PAPER: 8.5 x 11 office paper

STACK PAGES

ALIGN EDGES

DO NOT FOLD

STAPLE LEFT SIDE

USING COVER MARKS

STEP_07

ARCHIVE

STORE ISSUES CHRONOLOGICALLY

PRESERVE ISSUE NUMBERS

MAKE PUBLICLY ACCESSIBLE

PRINT

DISTRIBUTE

DOWNLOAD

REPRODUCE

END_OF_PROTOCOL









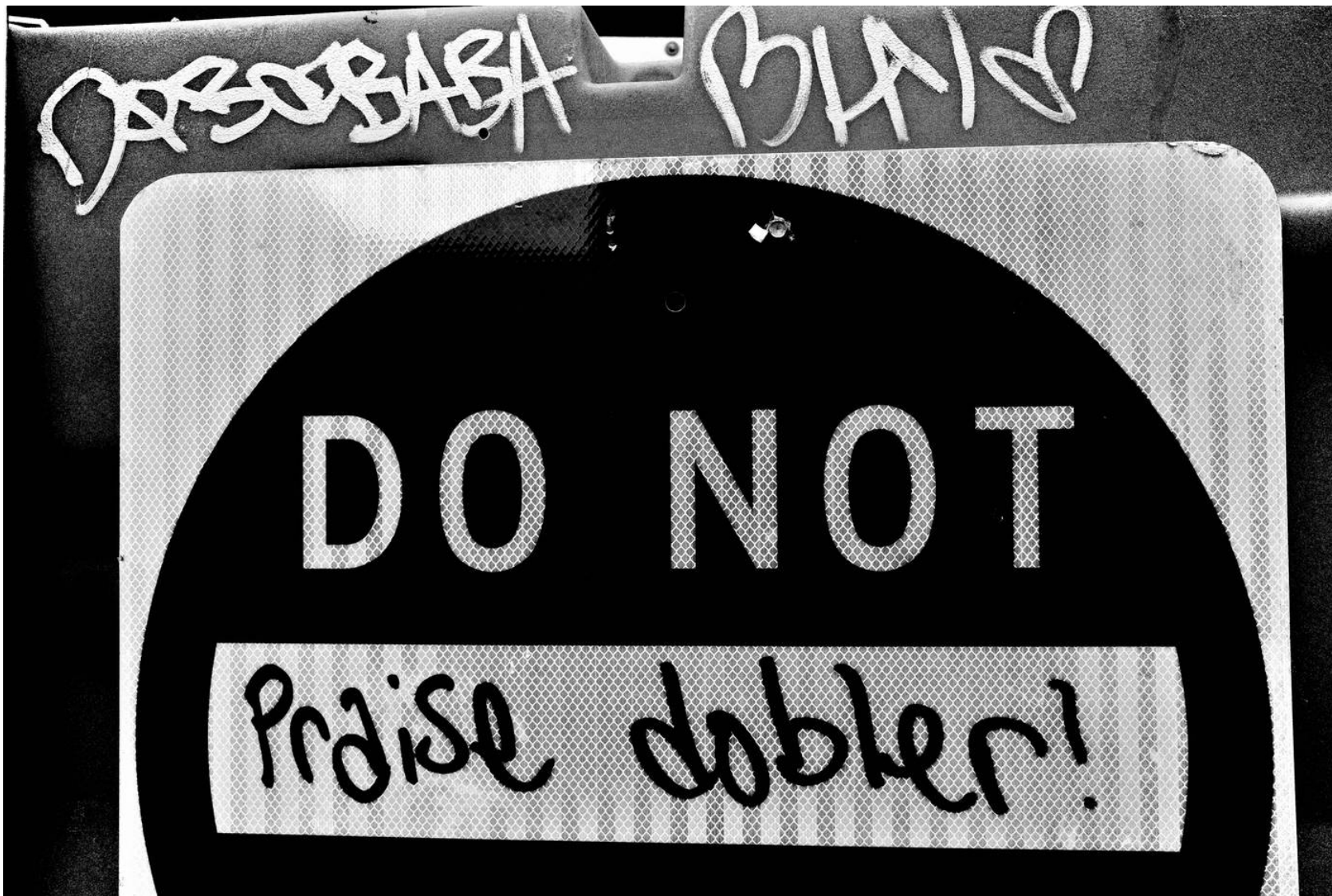




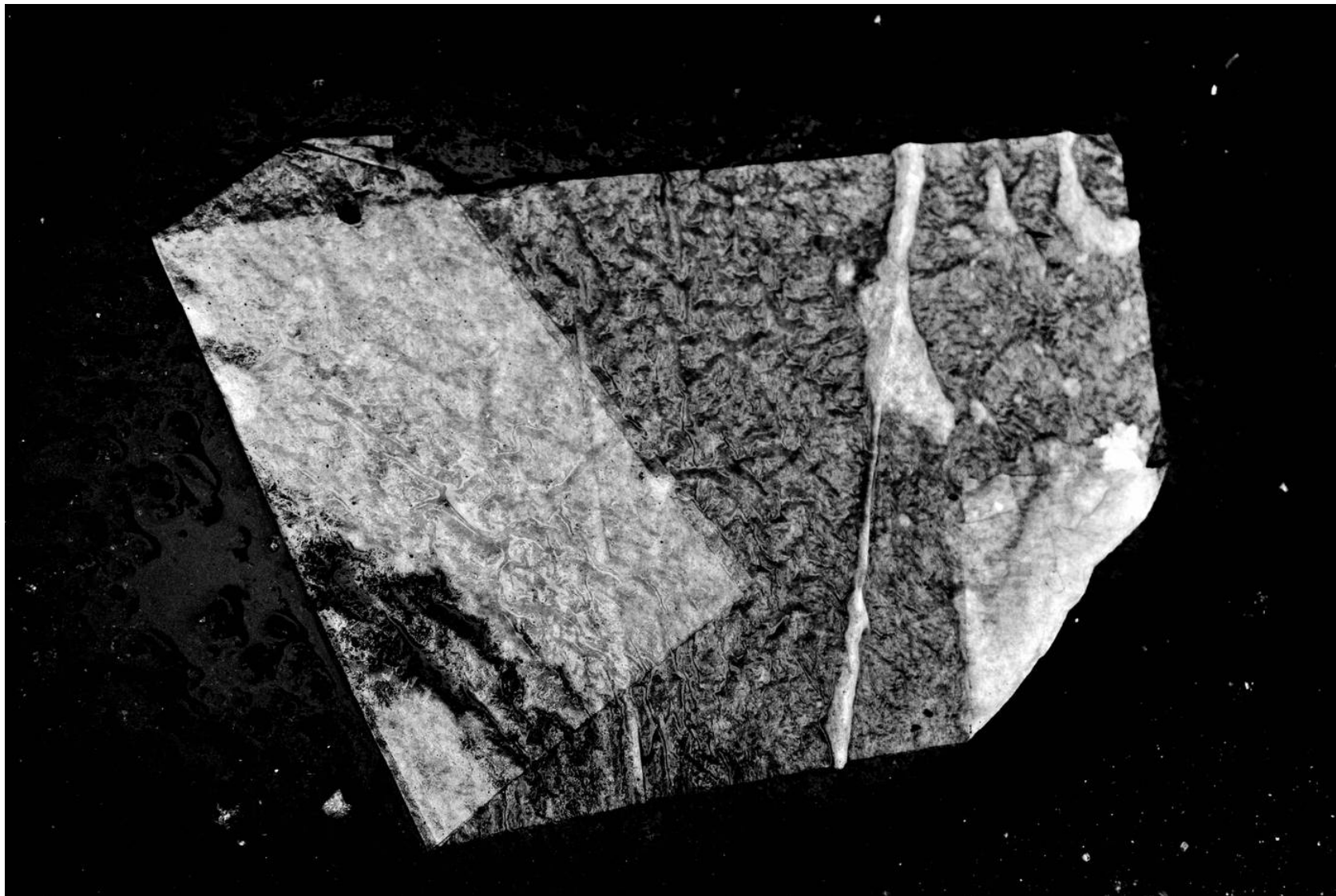












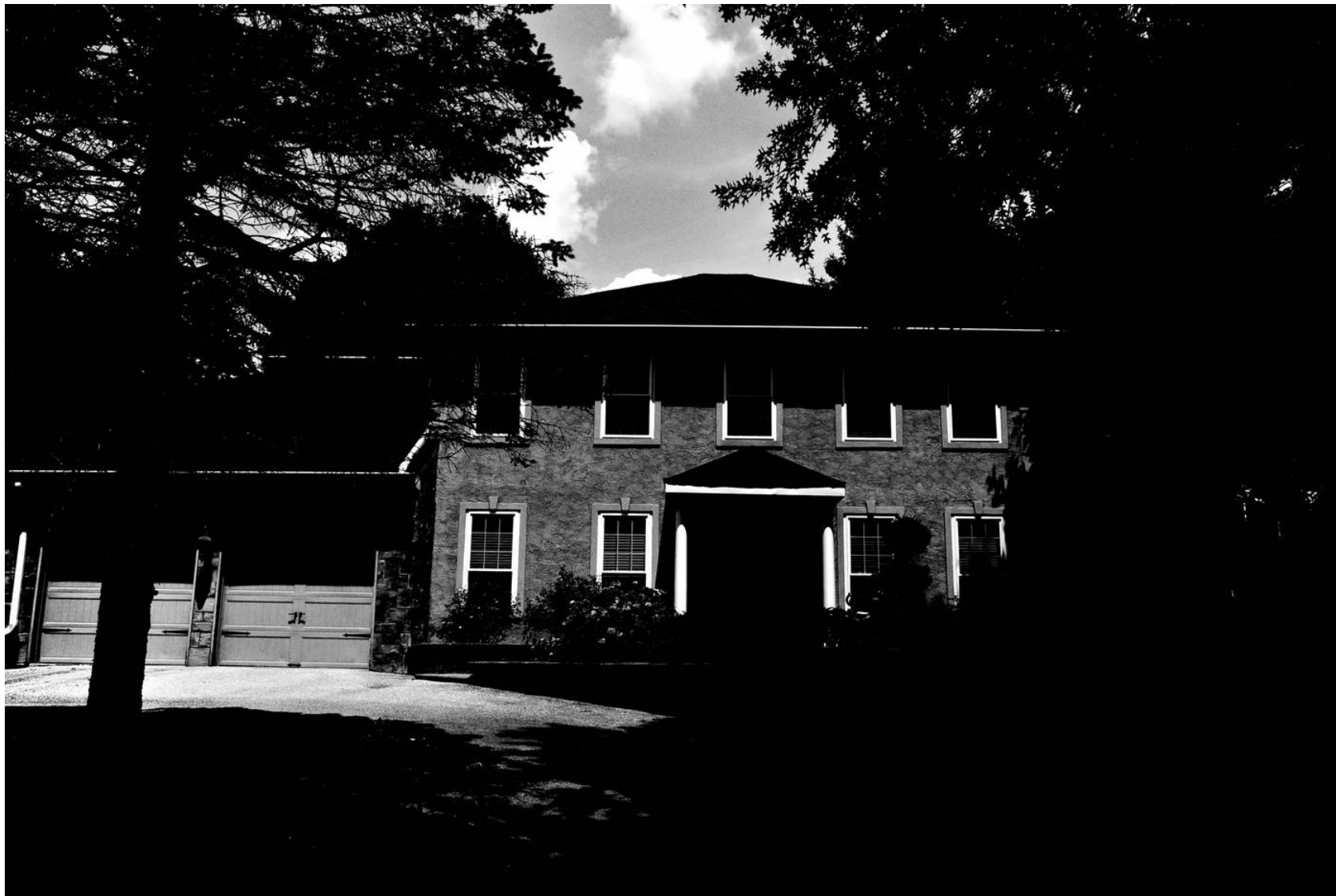






























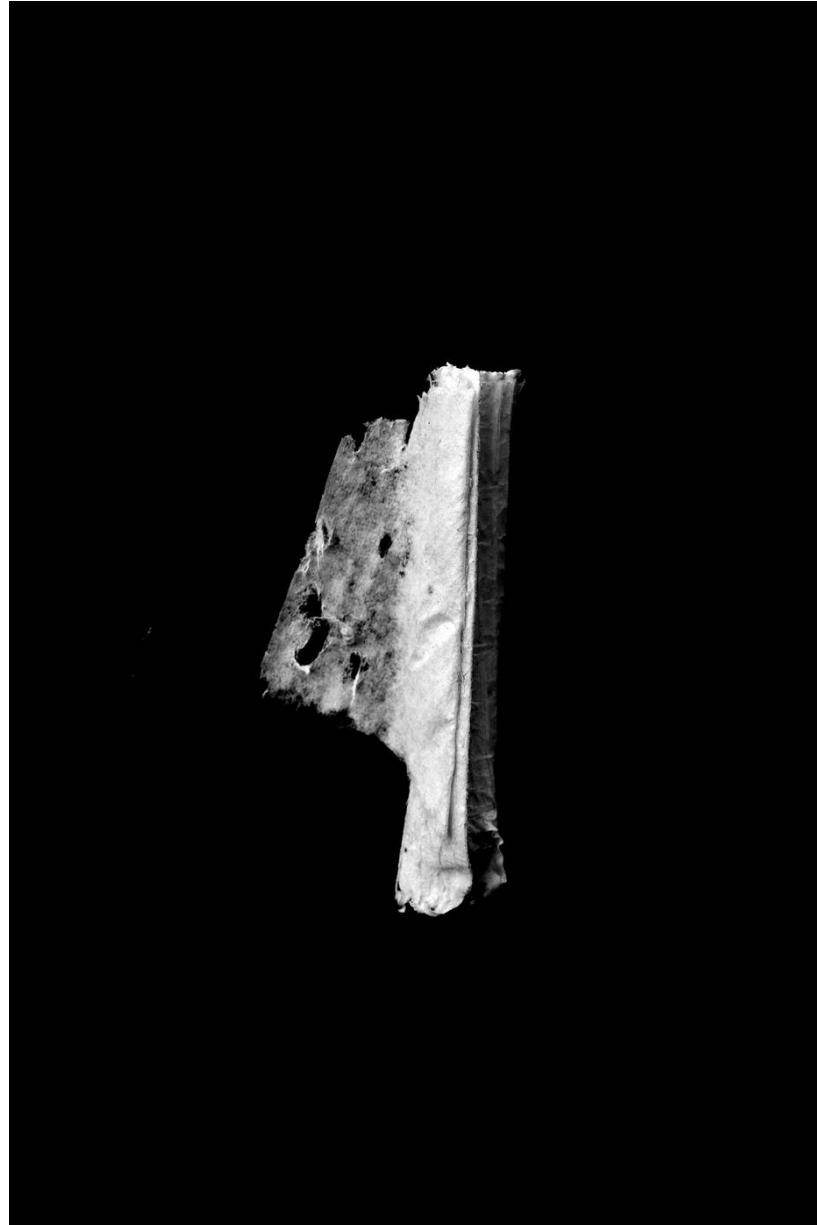








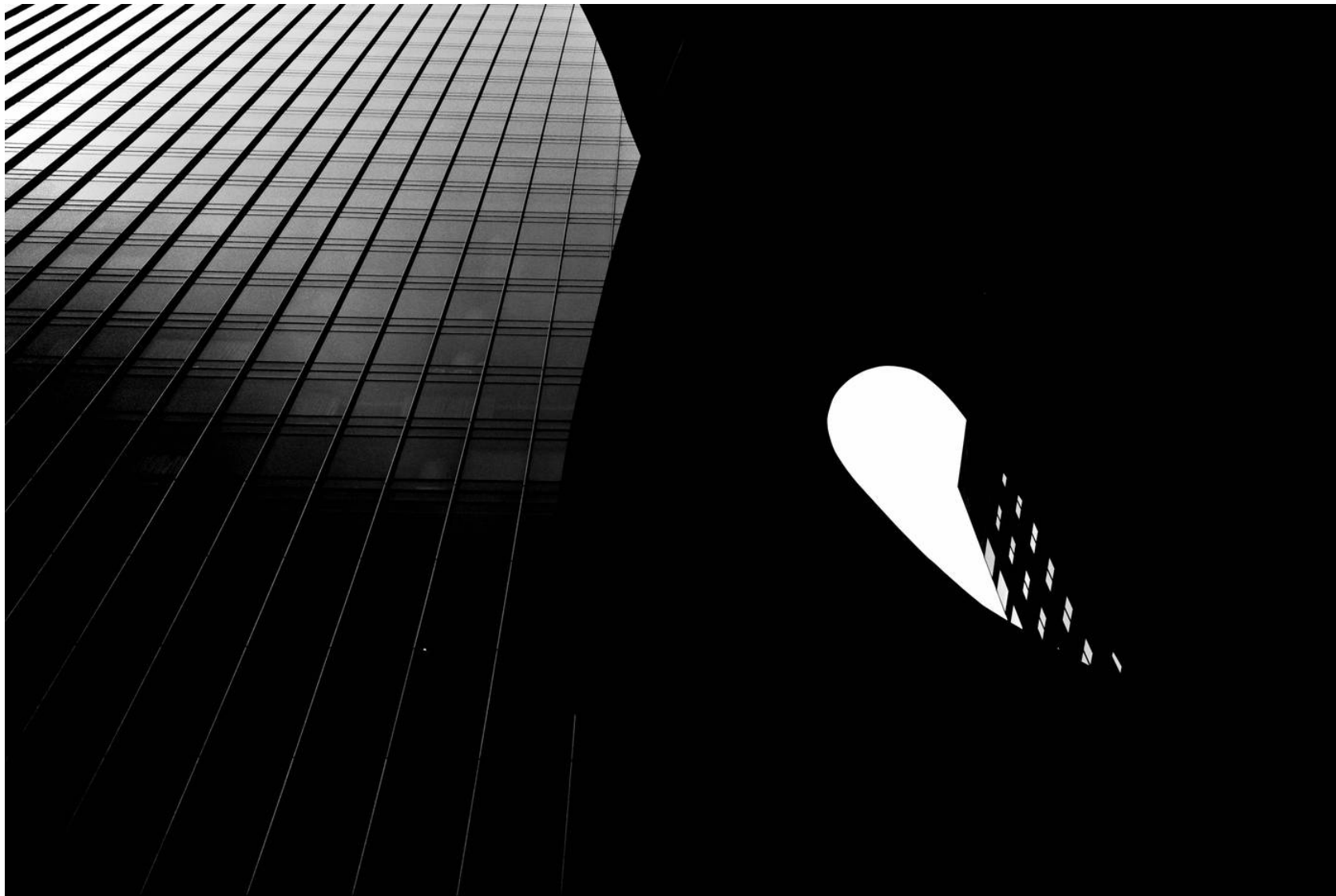










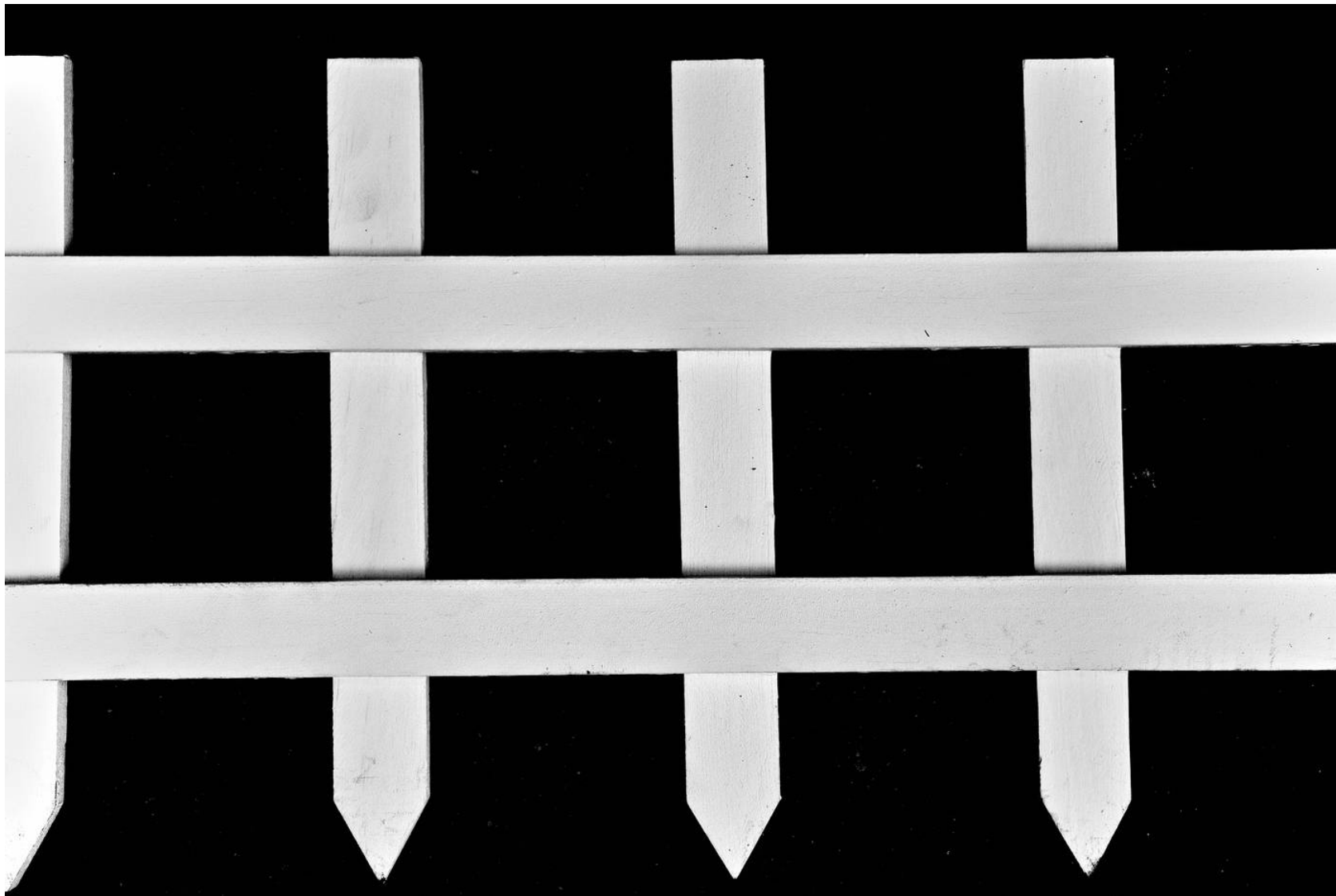














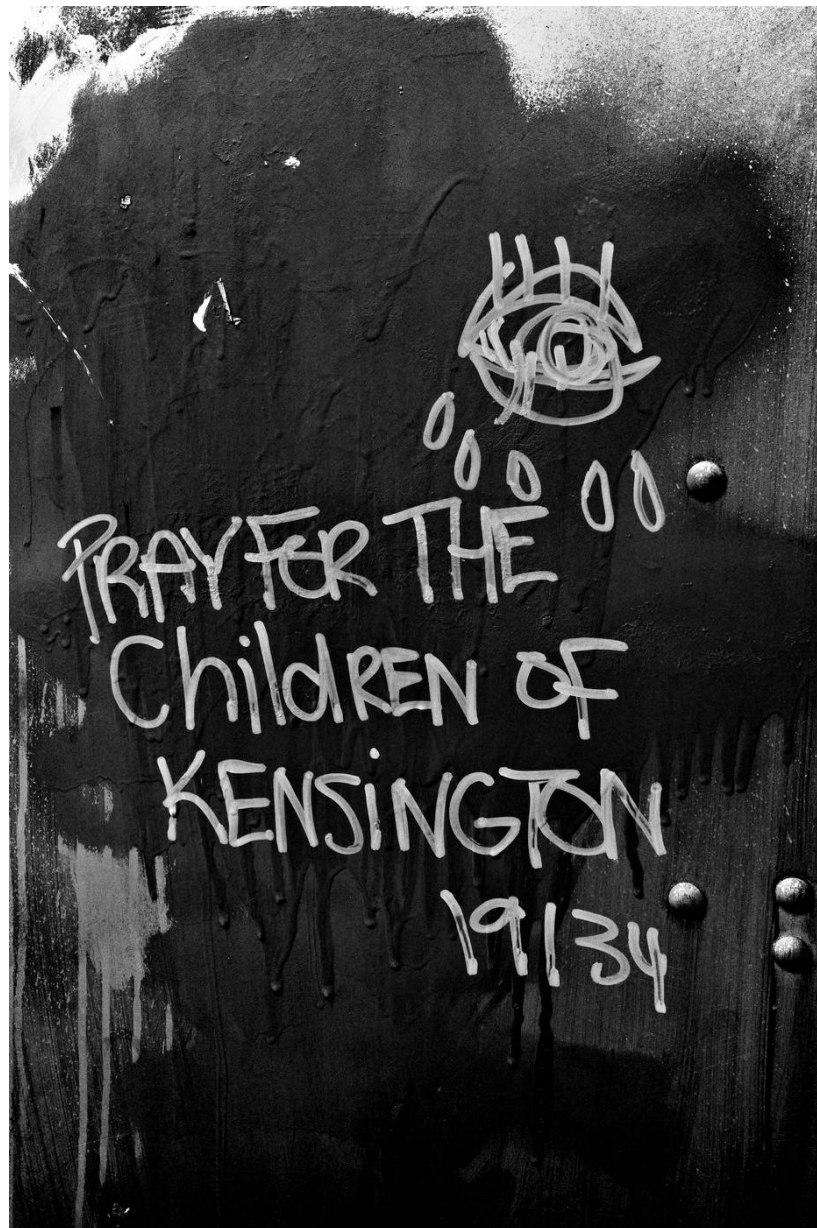














FLUX_128 — CONTACT SHEET — 50 FRAMES



FLUX_128 INDEX

001	-	2024-07-20	17:05:09	026	-	2024-07-22	07:15:49
002	-	2024-07-20	17:21:48	027	-	2024-07-22	07:16:38
003	-	2024-07-20	17:25:17	028	-	2024-07-22	07:19:34
004	-	2024-07-20	17:29:53	029	-	2024-07-22	07:37:53
005	-	2024-07-20	17:30:20	030	-	2024-07-22	07:45:38
006	-	2024-07-20	17:31:13	031	-	2024-07-22	07:47:39
007	-	2024-07-20	17:41:16	032	-	2024-07-22	07:49:59
008	-	2024-07-20	17:49:22	033	-	2024-07-22	07:51:16
009	-	2024-07-20	18:26:47	034	-	2024-07-22	07:53:41
010	-	2024-07-20	18:35:19	035	-	2024-07-22	08:05:36
011	-	2024-07-20	18:43:14	036	-	2024-07-22	09:46:42
012	-	2024-07-20	18:48:41	037	-	2024-07-22	09:47:56
013	-	2024-07-21	10:27:16	038	-	2024-07-22	09:50:13
014	-	2024-07-21	12:02:50	039	-	2024-07-22	10:05:07
015	-	2024-07-21	12:44:21	040	-	2024-07-22	10:10:43
016	-	2024-07-21	12:53:45	041	-	2024-07-22	10:19:47
017	-	2024-07-21	13:24:57	042	-	2024-07-22	10:23:22
018	-	2024-07-21	13:36:29	043	-	2024-07-22	10:25:56
019	-	2024-07-21	14:10:45	044	-	2024-07-22	10:31:39
020	-	2024-07-21	14:49:08	045	-	2024-07-22	10:48:50
021	-	2024-07-21	16:46:36	046	-	2024-07-22	10:49:37
022	-	2024-07-22	06:07:10	047	-	2024-07-22	11:10:13
023	-	2024-07-22	07:11:05	048	-	2024-07-22	12:10:39
024	-	2024-07-22	07:13:24	049	-	2024-07-22	12:11:24
025	-	2024-07-22	07:13:41	050	-	2024-07-22	12:15:41



