

**FLUX\_281**

2026-02-26 → 2026-02-27

Dante Sisofo

---

---



---

## WHAT IS FLUX

---

FLUX is an open-source chronological photography publishing and archival system. Every 50 photographs automatically becomes a new issue.

### The system generates:

- PDF publication
- contact sheet
- metadata manifest
- original JPEG files
- digital archive update

---

### STEP\_01

#### CAPTURE

---

CAMERA: compact digital camera

FILE TYPE: small JPEG

COLOR MODE: high contrast black and white

### PURPOSE:

- eliminate processing
- eliminate workflow friction
- maximize speed

---

### STEP\_02

#### SELECT

---

GENERATE DIGITAL CONTACT SHEET

REVIEW SMALL THUMBNAILS ONLY

MAKE FINAL SELECTIONS  
FROM CONTACT SHEET VIEW

SELECT QUICKLY

### DO NOT:

- overedit
- oversequence
- overanalyze

TARGET: 50 PHOTOGRAPHS PER ISSUE

---

---

### STEP\_03

#### UPLOAD

---

DRAG SELECTED FILES INTO:

/FLUX\_UPLOAD/

### RUN:

./flux\_update.command  
OR: python3 flux\_update.py

---

### STEP\_04

#### SYSTEM AUTOMATION

---

### SYSTEM AUTOMATICALLY:

- detects new photographs
- reads timestamps
- preserves chronological order
- generates derivatives
- creates metadata
- generates SHA256 hashes
- rebuilds manifests
- updates digital archive
- rebuilds timeline
- uploads archive online

### DIGITAL ARCHIVE:

flux.dantesisofo.com

---

#### ARCHIVE STRUCTURE

---

### DIGITAL ARCHIVE INCLUDES:

- chronological timeline
- issue browser
- downloadable PDFs
- original JPEG files
- metadata manifests
- contact sheets

ALL PHOTOGRAPHS REMAIN  
IN CHRONOLOGICAL ORDER

---

---

### STEP\_05

#### ISSUE GENERATION

---

WHEN 50 NEW PHOTOGRAPHS  
ARE DETECTED:

### SYSTEM AUTOMATICALLY:

- creates next FLUX issue
- sequences photographs
- preserves capture order
- generates issue number
- generates issue PDF
- updates publication archive

NO MANUAL LAYOUT REQUIRED

---

### STEP\_06

#### PRINT

---

PRINT: double sided

PAPER: 8.5 x 11 office paper

STACK PAGES

ALIGN EDGES

DO NOT FOLD

STAPLE LEFT SIDE

USING COVER MARKS

---

### STEP\_07

#### ARCHIVE

---

STORE ISSUES CHRONOLOGICALLY

PRESERVE ISSUE NUMBERS

MAKE PUBLICLY ACCESSIBLE

PRINT

DISTRIBUTE

DOWNLOAD

REPRODUCE

---

END\_OF\_PROTOCOL

---





































































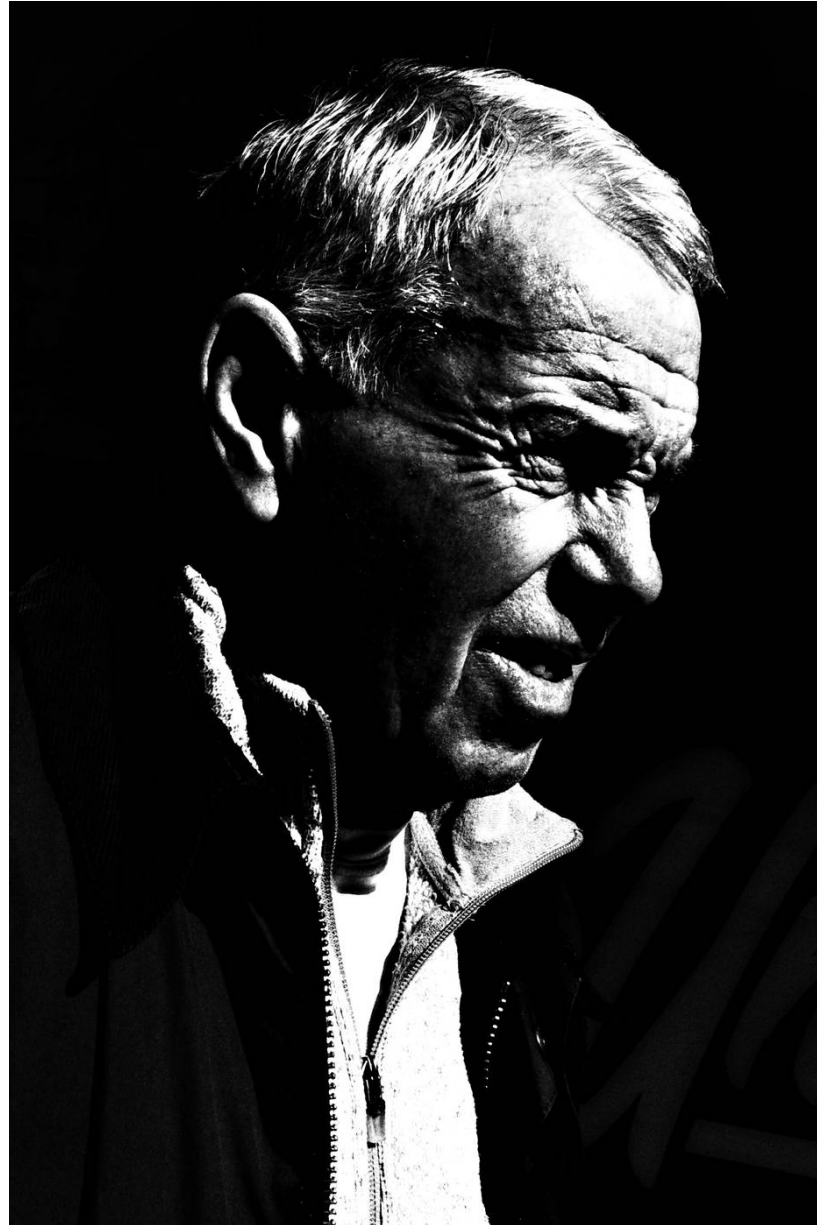




































FLUX\_281 — CONTACT SHEET — 50 FRAMES



001



002



003



004



005



006



007



008



009



010



011



012



013



014



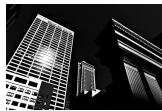
015



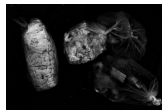
016



017



018



019



020



021



022



023



024



025



026



027



028



029



030



031



032



033



034



035



036



037



038



039



040



041



042



043



044



045



046



047



048



049



050

**FLUX\_281 INDEX**

---

001	-	2026-02-26	12:44:32	026	-	2026-02-27	12:28:28
002	-	2026-02-26	12:49:33	027	-	2026-02-27	12:29:17
003	-	2026-02-26	14:25:21	028	-	2026-02-27	12:30:39
004	-	2026-02-26	14:28:36	029	-	2026-02-27	12:34:46
005	-	2026-02-26	14:40:23	030	-	2026-02-27	12:36:55
006	-	2026-02-26	14:50:31	031	-	2026-02-27	12:37:33
007	-	2026-02-26	15:05:39	032	-	2026-02-27	12:38:24
008	-	2026-02-26	15:07:52	033	-	2026-02-27	12:41:53
009	-	2026-02-26	15:10:43	034	-	2026-02-27	12:45:27
010	-	2026-02-26	15:15:41	035	-	2026-02-27	12:46:08
011	-	2026-02-26	15:27:00	036	-	2026-02-27	12:47:34
012	-	2026-02-26	15:36:22	037	-	2026-02-27	12:50:32
013	-	2026-02-26	15:42:04	038	-	2026-02-27	12:51:10
014	-	2026-02-26	15:42:15	039	-	2026-02-27	12:52:38
015	-	2026-02-26	17:00:11	040	-	2026-02-27	12:53:14
016	-	2026-02-26	17:02:24	041	-	2026-02-27	12:55:23
017	-	2026-02-26	17:17:52	042	-	2026-02-27	12:56:19
018	-	2026-02-27	12:19:28	043	-	2026-02-27	13:03:16
019	-	2026-02-27	12:22:18	044	-	2026-02-27	13:05:02
020	-	2026-02-27	12:22:30	045	-	2026-02-27	13:05:08
021	-	2026-02-27	12:24:04	046	-	2026-02-27	13:08:02
022	-	2026-02-27	12:26:24	047	-	2026-02-27	13:10:55
023	-	2026-02-27	12:26:39	048	-	2026-02-27	13:11:30
024	-	2026-02-27	12:27:49	049	-	2026-02-27	13:11:41
025	-	2026-02-27	12:28:09	050	-	2026-02-27	13:31:13



