

FLUX_324

2025-08-17 → 2025-08-22

Dante Sisofo

WHAT IS FLUX

FLUX is an open-source chronological photography publishing system.

36 photographs become one complete numbered issue.

The system generates:

- PDF publication
- contact sheet
- metadata manifest
- printable issue

STEP 01

CAPTURE

CAMERA: compact digital camera
FILE TYPE: small JPEG
COLOR MODE: high contrast
monochrome

PURPOSE:

- eliminate processing
- eliminate workflow friction
- maximize speed

STEP 02

SELECT

SELECT 36 PHOTOGRAPHS

REVIEW PHOTOGRAPHS
AS SMALL THUMBNAILS

MAKE FINAL SELECTIONS
QUICKLY

DO NOT:

- overedit
- oversequence
- overanalyze

STEP_03

UPLOAD

UPLOAD 36 JPEG FILES AT:

flux.dantesisofo.com
/generator/

STEP_04

SYSTEM AUTOMATION

SYSTEM AUTOMATICALLY:

- reads timestamps
- preserves chronological order
- generates derivatives
- creates metadata
- generates contact sheet
- generates issue number
- generates issue PDF
- compresses for sharing

OUTPUT:

downloadable issue PDF

ISSUE STRUCTURE

DIGITAL ISSUE INCLUDES:

- chronological photo pages
- 6x6 contact sheet
- metadata manifest
- printable PDF

ALL PHOTOGRAPHS REMAIN
IN CHRONOLOGICAL ORDER

STEP_05

ISSUE GENERATION

SYSTEM AUTOMATICALLY:

- reads timestamps
- sequences photographs
- builds complete PDF

NO MANUAL LAYOUT

STEP_06

PRINT

PRINT: double sided
PAPER: 8.5 x 11 office paper

STACK PAGES

ALIGN EDGES

DO NOT FOLD

STAPLE LEFT SIDE

USING COVER MARKS

STEP_07

DISTRIBUTE

PRINT

DISTRIBUTE

STORE

IN MANILA FOLDERS

CHRONOLOGICALLY

ARCHIVE

REPEAT

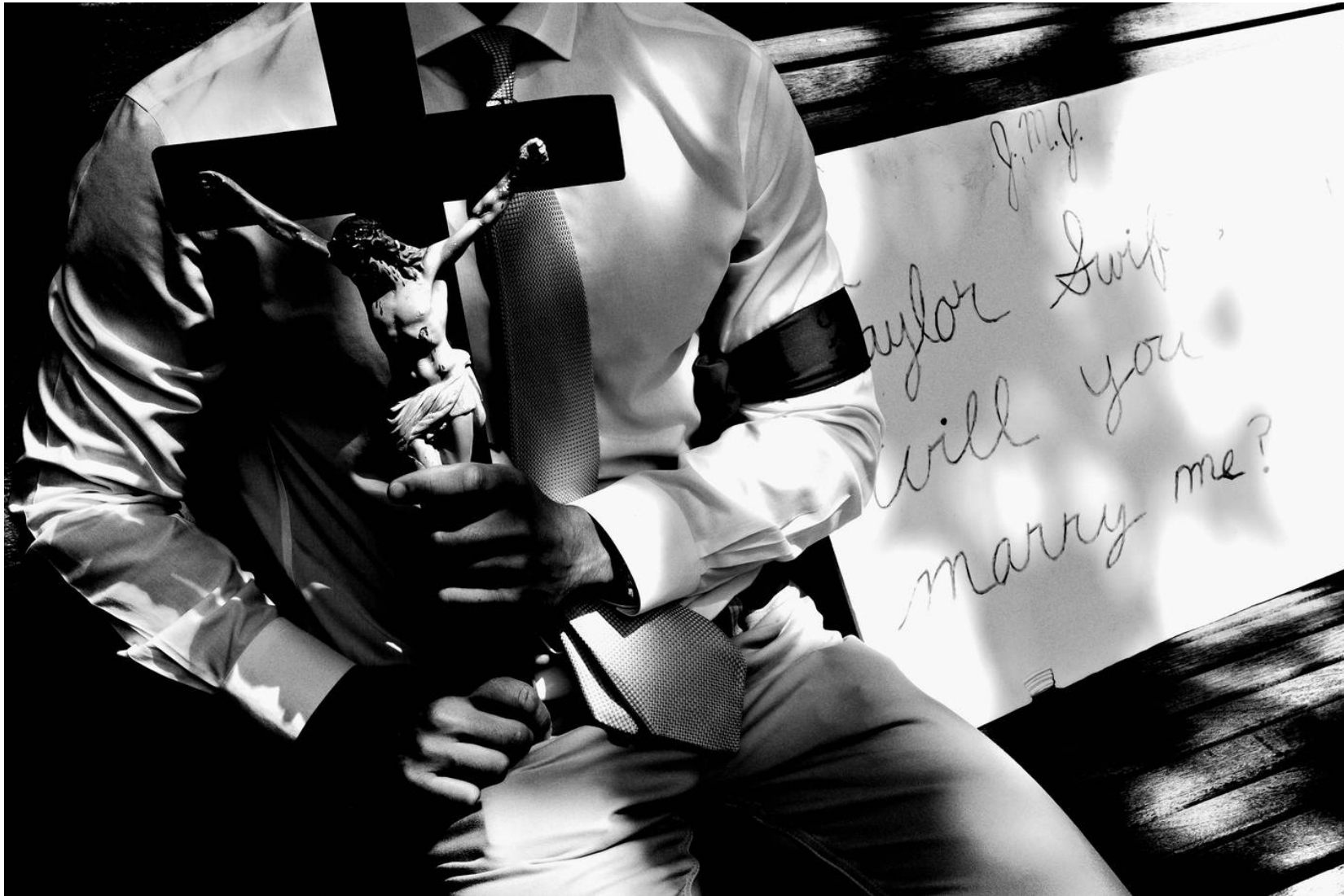
END_OF_PROTOCOL

SCAN TO CREATE

YOUR OWN FLUX ISSUE



























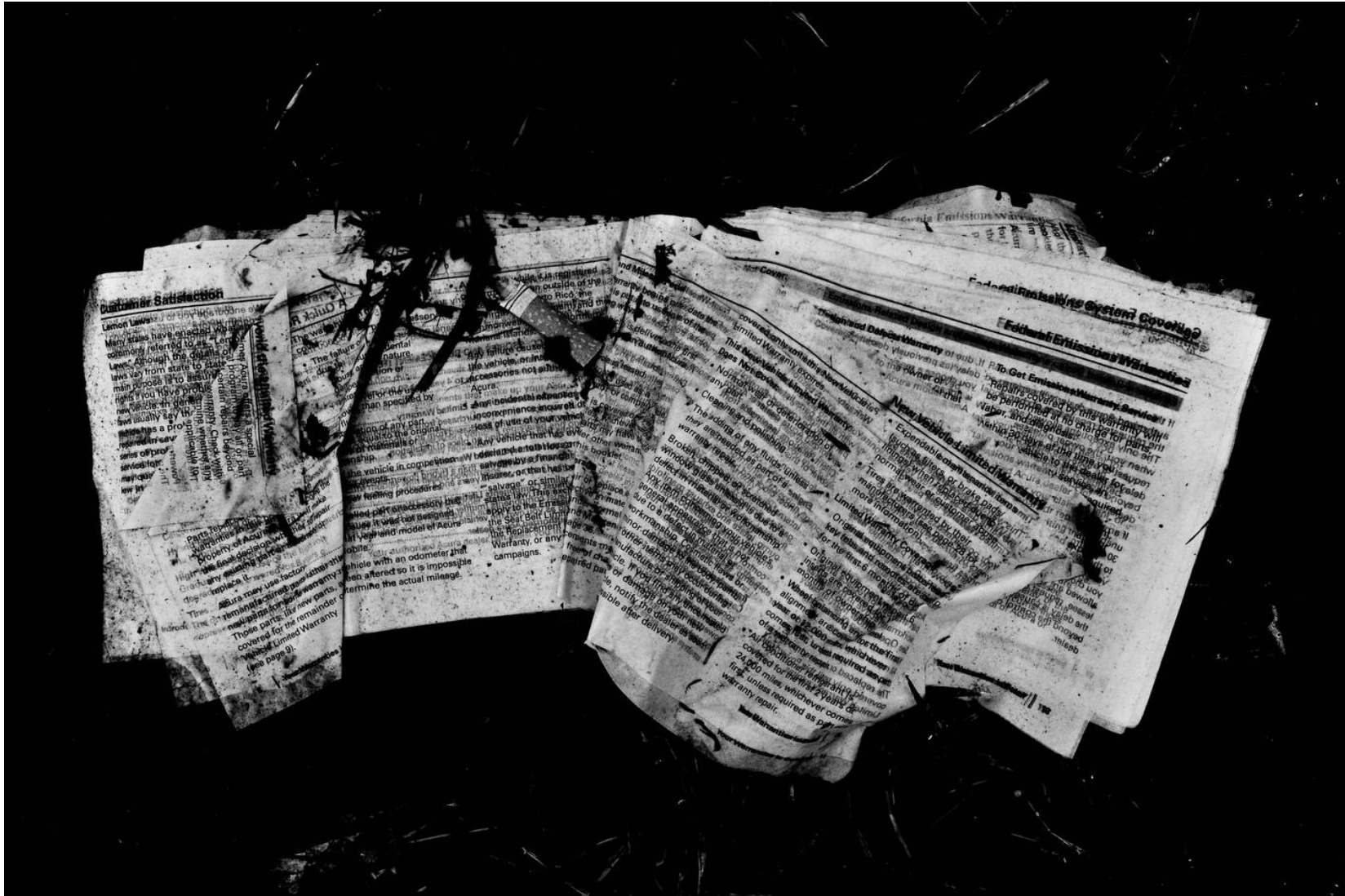












Customer Satisfaction

Limited Warranty of sub. If F.R. Get Emissions Warranty Services...
Many states have enacted laws commonly referred to as Lemon Laws. Although the details of laws vary from state to state, many of these laws are designed to help you if you have a problem with a new vehicle in the first few years of its life. You usually say it has a problem if you have a series of problems or a major defect that cannot be repaired after a reasonable number of attempts.

Parts and labor for repairs are covered by the manufacturer's warranty. The manufacturer's warranty is a promise that the vehicle will be free from defects in materials and workmanship for a certain period of time. The manufacturer's warranty is a promise that the vehicle will be free from defects in materials and workmanship for a certain period of time.

Federal Emissions System Coverage

Designated Defect Warranty of sub. If F.R. Get Emissions Warranty Services...
This limited warranty covers the cost of repairs to the emissions system of a new vehicle. The warranty is limited to the cost of parts and labor for repairs to the emissions system. The warranty is limited to the cost of parts and labor for repairs to the emissions system.

Parts and labor for repairs are covered by the manufacturer's warranty. The manufacturer's warranty is a promise that the vehicle will be free from defects in materials and workmanship for a certain period of time. The manufacturer's warranty is a promise that the vehicle will be free from defects in materials and workmanship for a certain period of time.

New Limited Warranty Services

Expanded Emissions System Coverage...
This limited warranty covers the cost of repairs to the emissions system of a new vehicle. The warranty is limited to the cost of parts and labor for repairs to the emissions system. The warranty is limited to the cost of parts and labor for repairs to the emissions system.

Parts and labor for repairs are covered by the manufacturer's warranty. The manufacturer's warranty is a promise that the vehicle will be free from defects in materials and workmanship for a certain period of time. The manufacturer's warranty is a promise that the vehicle will be free from defects in materials and workmanship for a certain period of time.

Other Warranty Services

Parts and labor for repairs are covered by the manufacturer's warranty. The manufacturer's warranty is a promise that the vehicle will be free from defects in materials and workmanship for a certain period of time. The manufacturer's warranty is a promise that the vehicle will be free from defects in materials and workmanship for a certain period of time.

Parts and labor for repairs are covered by the manufacturer's warranty. The manufacturer's warranty is a promise that the vehicle will be free from defects in materials and workmanship for a certain period of time. The manufacturer's warranty is a promise that the vehicle will be free from defects in materials and workmanship for a certain period of time.





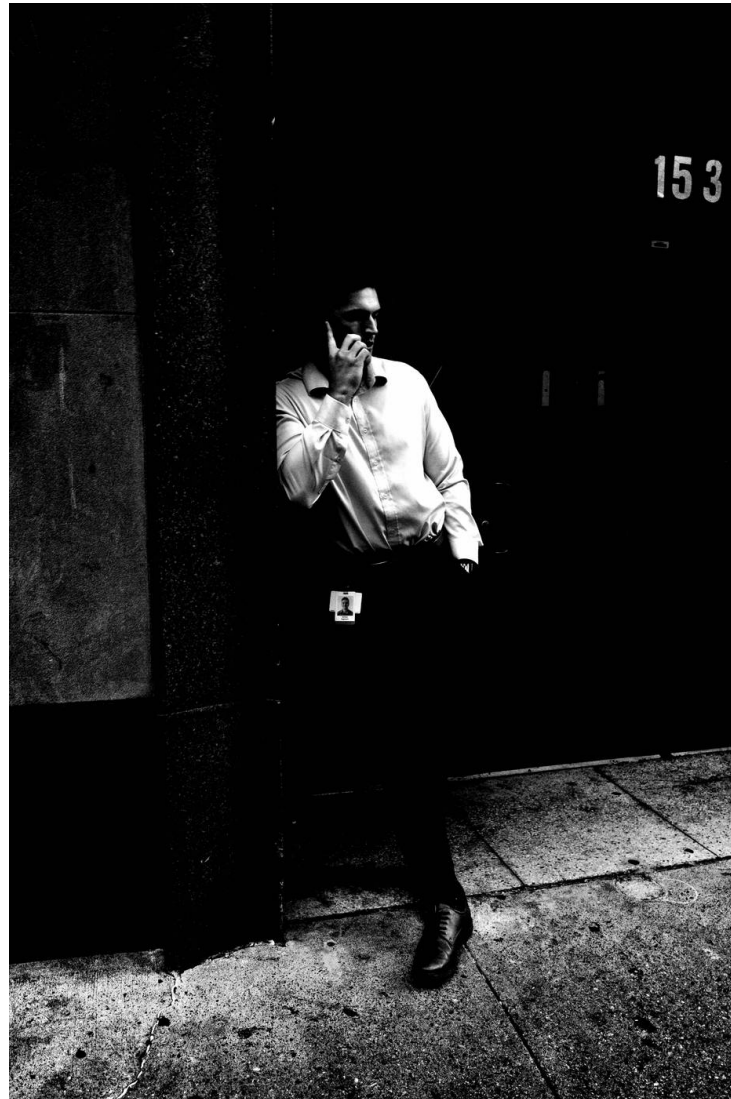












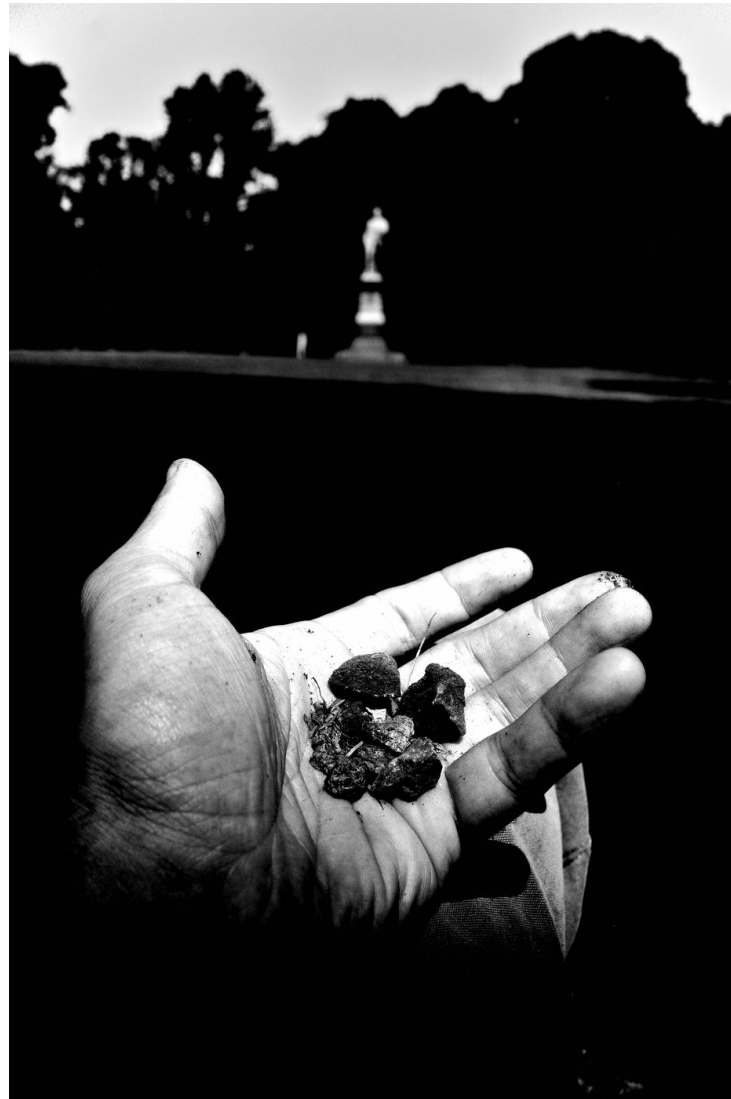






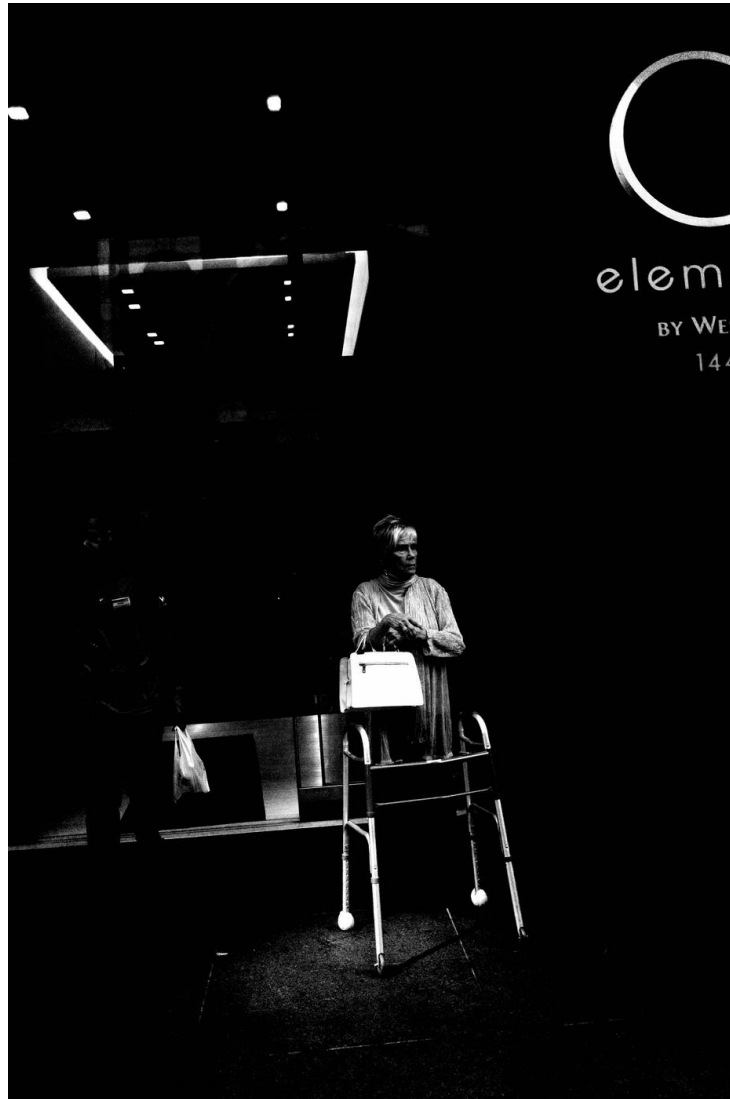
















001



002



003



004



005



006



007



008



009



010



011



012



013



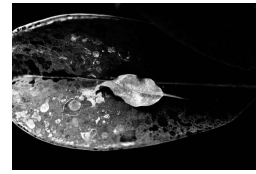
014



015



016



017



018



019



020



021



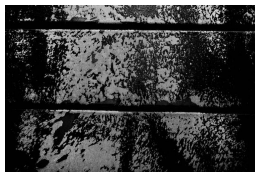
022



023



024



025



026



027



028



029



030



031



032



033



034



035



036

FLUX_324 INDEX

001	-	2025-08-17	13:03:27	019	-	2025-08-20	14:58:47
002	-	2025-08-17	13:09:56	020	-	2025-08-21	07:41:07
003	-	2025-08-17	13:54:02	021	-	2025-08-21	15:54:18
004	-	2025-08-17	15:04:47	022	-	2025-08-21	15:57:20
005	-	2025-08-17	15:07:50	023	-	2025-08-21	16:05:58
006	-	2025-08-19	15:44:07	024	-	2025-08-21	16:23:54
007	-	2025-08-19	15:45:42	025	-	2025-08-21	16:28:47
008	-	2025-08-19	15:54:22	026	-	2025-08-21	16:35:54
009	-	2025-08-19	15:56:15	027	-	2025-08-21	16:43:37
010	-	2025-08-19	15:56:41	028	-	2025-08-22	06:53:28
011	-	2025-08-19	16:33:34	029	-	2025-08-22	07:01:18
012	-	2025-08-19	16:34:49	030	-	2025-08-22	07:15:10
013	-	2025-08-19	17:22:43	031	-	2025-08-22	09:14:56
014	-	2025-08-19	17:24:37	032	-	2025-08-22	11:59:19
015	-	2025-08-20	06:54:33	033	-	2025-08-22	15:45:32
016	-	2025-08-20	14:43:52	034	-	2025-08-22	15:46:50
017	-	2025-08-20	14:45:44	035	-	2025-08-22	16:00:24
018	-	2025-08-20	14:54:27	036	-	2025-08-22	16:04:02



