

**FLUX\_380**

2026-01-31 → 2026-02-03

Dante Sisofo

---

---



---

## WHAT IS FLUX

---

FLUX is an open-source chronological photography publishing system.

36 photographs become one complete numbered issue.

### The system generates:

- PDF publication
- contact sheet
- metadata manifest
- printable issue

---

STEP\_01

## CAPTURE

---

CAMERA: compact digital camera  
FILE TYPE: small JPEG  
COLOR MODE: high contrast  
monochrome

### PURPOSE:

- eliminate processing
- eliminate workflow friction
- maximize speed

---

STEP\_02

## SELECT

---

SELECT 36 PHOTOGRAPHS

REVIEW PHOTOGRAPHS  
AS SMALL THUMBNAILS

MAKE FINAL SELECTIONS  
QUICKLY

### DO NOT:

- overedit
- oversequence
- overanalyze

---

STEP\_03

## UPLOAD

---

UPLOAD 36 JPEG FILES AT:

flux.dantesisofo.com  
/generator/

---

STEP\_04

## SYSTEM AUTOMATION

---

### SYSTEM AUTOMATICALLY:

- reads timestamps
- preserves chronological order
- generates derivatives
- creates metadata
- generates contact sheet
- generates issue number
- generates issue PDF
- compresses for sharing

### OUTPUT:

downloadable issue PDF

---

## ISSUE STRUCTURE

---

### DIGITAL ISSUE INCLUDES:

- chronological photo pages
- 6x6 contact sheet
- metadata manifest
- printable PDF

ALL PHOTOGRAPHS REMAIN  
IN CHRONOLOGICAL ORDER

---

STEP\_05

## ISSUE GENERATION

---

### SYSTEM AUTOMATICALLY:

- reads timestamps
- sequences photographs
- builds complete PDF

### NO MANUAL LAYOUT

---

STEP\_06

## PRINT

---

PRINT: double sided  
PAPER: 8.5 x 11 office paper

### STACK PAGES

### ALIGN EDGES

### DO NOT FOLD

### STAPLE LEFT SIDE

### USING COVER MARKS

---

STEP\_07

## DISTRIBUTE

---

### PRINT

### DISTRIBUTE

### STORE

### IN MANILA FOLDERS

### CHRONOLOGICALLY

### ARCHIVE

### REPEAT

---

END\_OF\_PROTOCOL

---

SCAN TO CREATE

YOUR OWN FLUX ISSUE













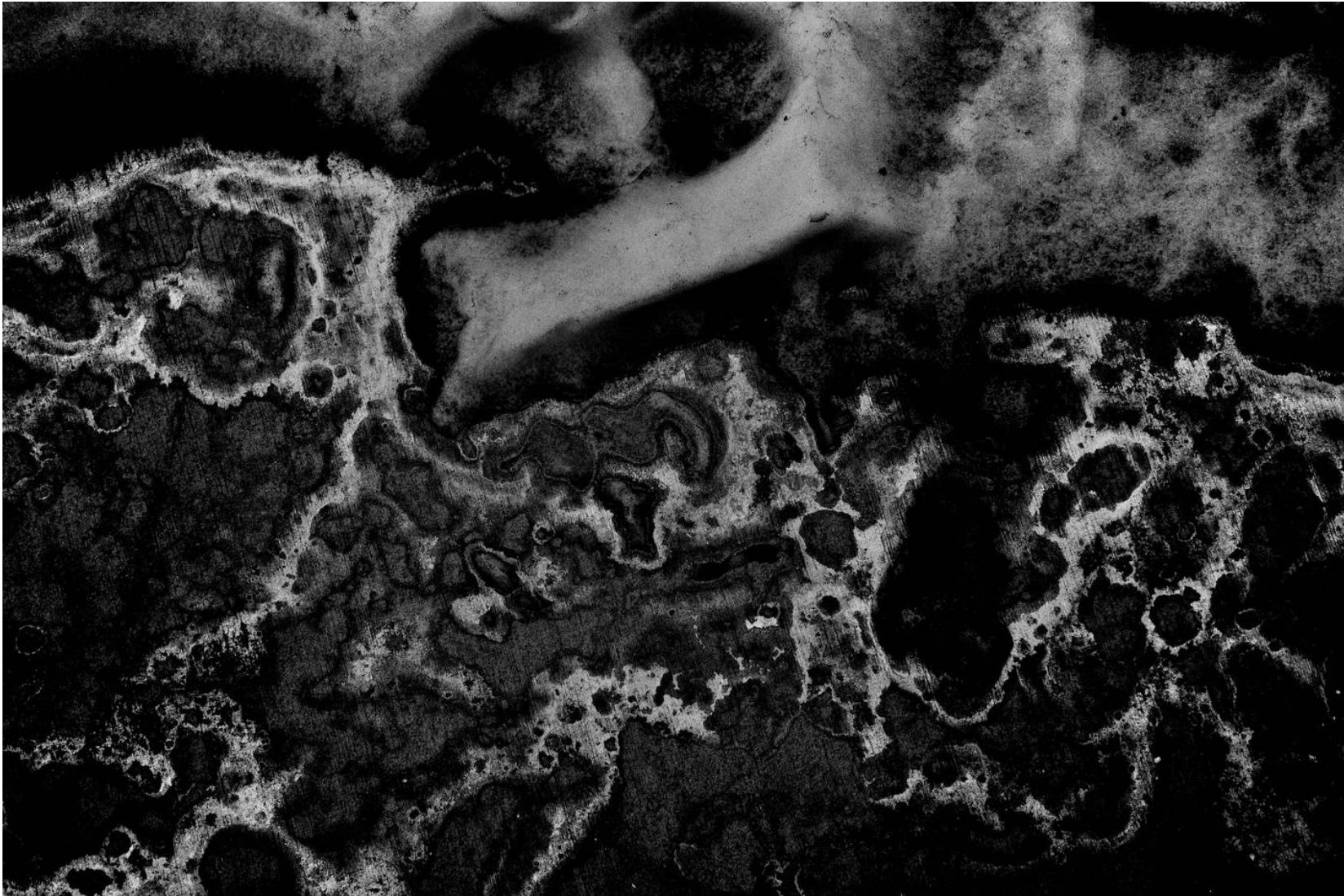
























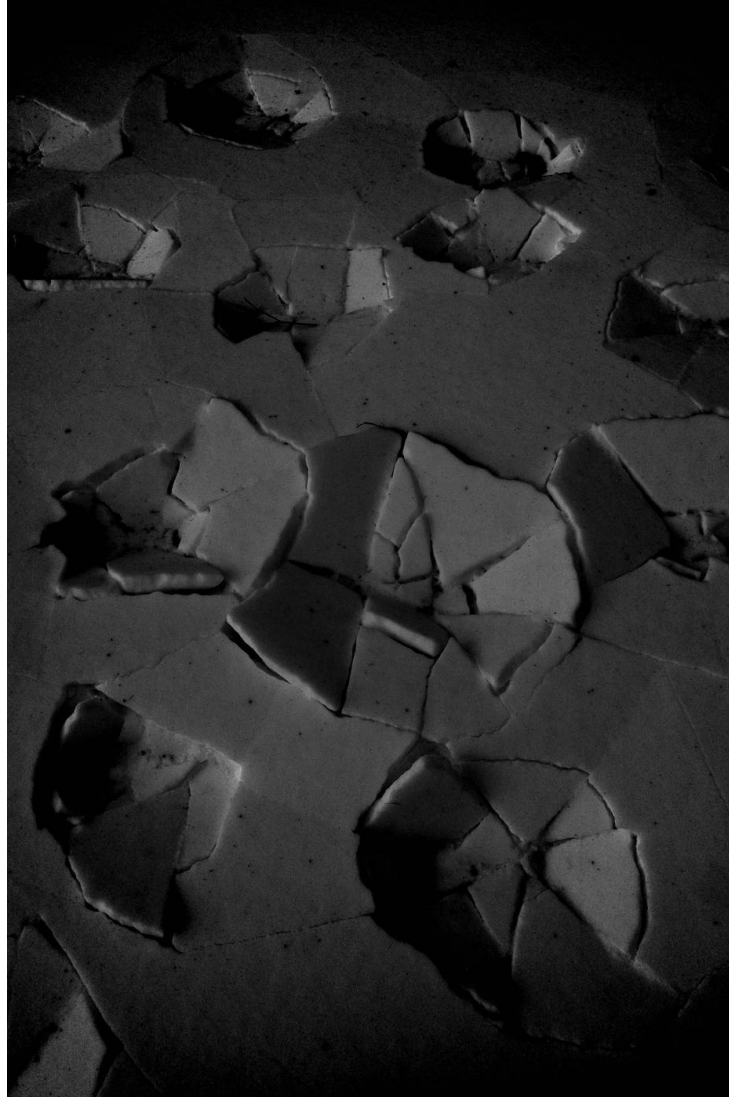




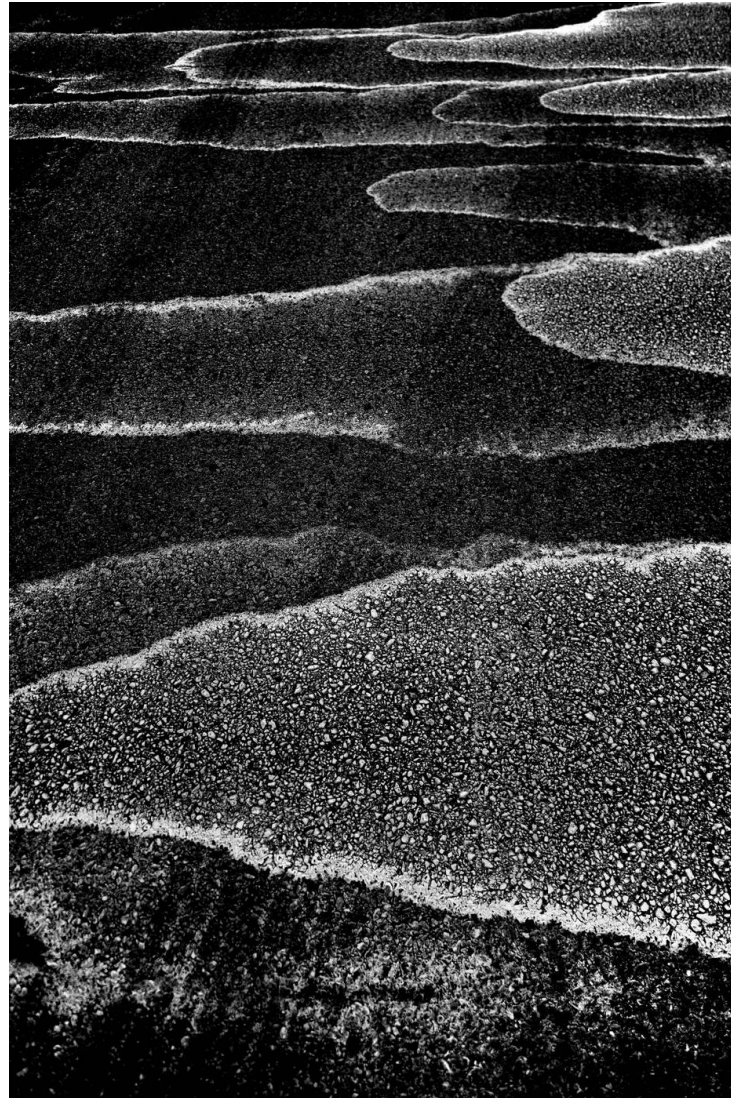








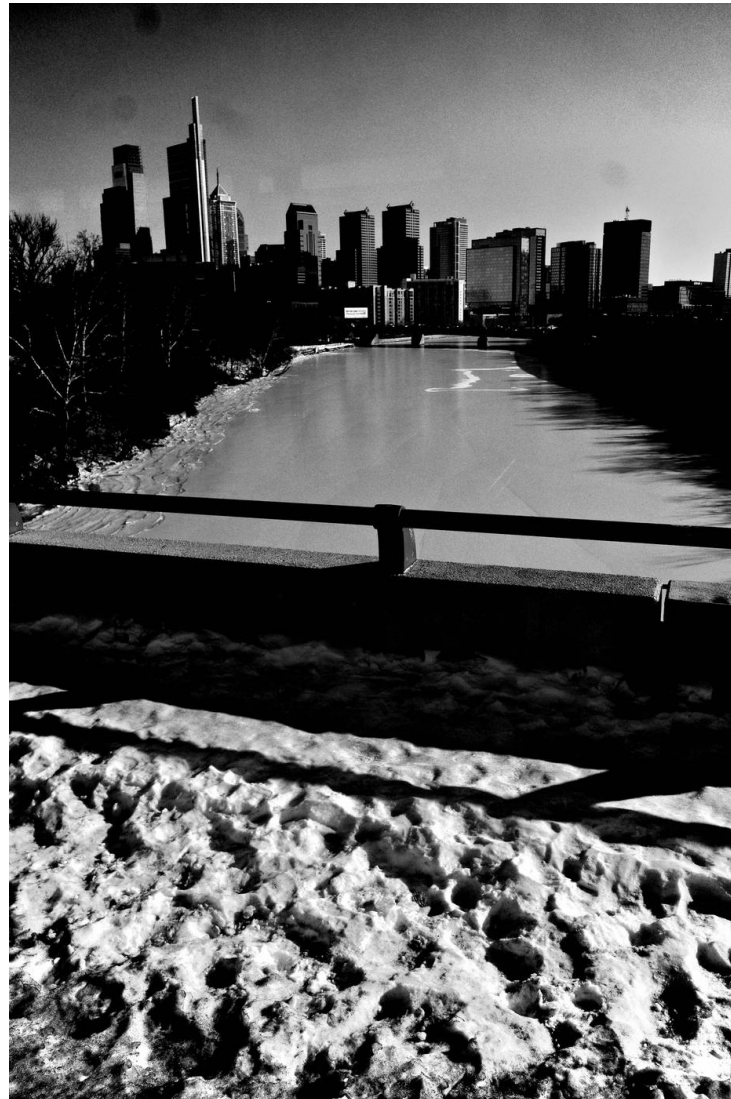
































001



002



003



004



005



006



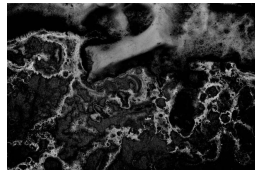
007



008



009



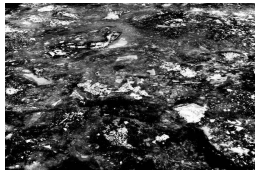
010



011



012



013



014



015



016



017



018



019



020



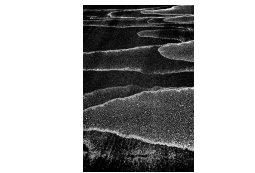
021



022



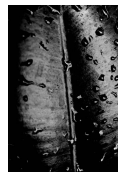
023



024



025



026



027



028



029



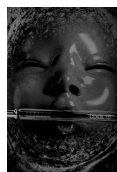
030



031



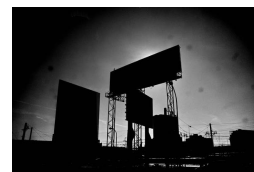
032



033



034



035



036

**FLUX\_380 INDEX**

001	-	2026-01-31	11:55:05	019	-	2026-02-01	13:30:24
002	-	2026-01-31	13:12:42	020	-	2026-02-01	14:19:35
003	-	2026-01-31	13:19:33	021	-	2026-02-02	07:15:00
004	-	2026-01-31	13:23:04	022	-	2026-02-02	07:15:57
005	-	2026-01-31	13:25:02	023	-	2026-02-02	07:20:28
006	-	2026-01-31	13:37:44	024	-	2026-02-02	07:23:13
007	-	2026-01-31	13:51:26	025	-	2026-02-02	10:32:33
008	-	2026-01-31	13:52:25	026	-	2026-02-02	13:34:10
009	-	2026-01-31	14:08:20	027	-	2026-02-02	13:36:18
010	-	2026-02-01	10:22:25	028	-	2026-02-02	14:53:39
011	-	2026-02-01	10:23:19	029	-	2026-02-02	15:03:24
012	-	2026-02-01	10:28:06	030	-	2026-02-02	15:57:56
013	-	2026-02-01	11:19:41	031	-	2026-02-02	16:03:05
014	-	2026-02-01	11:22:38	032	-	2026-02-02	16:08:45
015	-	2026-02-01	11:25:52	033	-	2026-02-02	16:13:31
016	-	2026-02-01	12:55:06	034	-	2026-02-03	07:32:08
017	-	2026-02-01	13:01:50	035	-	2026-02-03	14:23:18
018	-	2026-02-01	13:02:29	036	-	2026-02-03	15:05:08



