

**FLUX\_447**

2026-06-02 → 2026-06-02

Dante Sisofo

---

---



---

## WHAT IS FLUX

---

FLUX is an open-source chronological photography publishing system.

36 photographs become one complete numbered issue.

### The system generates:

- PDF publication
- contact sheet
- metadata manifest
- printable issue

---

### STEP\_01

#### CAPTURE

---

CAMERA: compact digital camera  
FILE TYPE: small JPEG  
COLOR MODE: high contrast  
monochrome

### PURPOSE:

- eliminate processing
- eliminate workflow friction
- maximize speed

---

### STEP\_02

#### SELECT

---

SELECT 36 PHOTOGRAPHS

REVIEW PHOTOGRAPHS  
AS SMALL THUMBNAILS

MAKE FINAL SELECTIONS  
QUICKLY

### DO NOT:

- overedit
- oversequence
- overanalyze

---

### STEP\_03

#### UPLOAD

---

UPLOAD 36 JPEG FILES AT:

flux.dantesisofo.com  
/generator/

---

### STEP\_04

#### SYSTEM AUTOMATION

---

### SYSTEM AUTOMATICALLY:

- reads timestamps
- preserves chronological order
- generates derivatives
- creates metadata
- generates contact sheet
- generates issue number
- generates issue PDF
- compresses for sharing

### OUTPUT:

downloadable issue PDF

---

#### ISSUE STRUCTURE

---

### DIGITAL ISSUE INCLUDES:

- chronological photo pages
- 6x6 contact sheet
- metadata manifest
- printable PDF

ALL PHOTOGRAPHS REMAIN  
IN CHRONOLOGICAL ORDER

---

### STEP\_05

#### ISSUE GENERATION

---

### SYSTEM AUTOMATICALLY:

- reads timestamps
- sequences photographs
- builds complete PDF

### NO MANUAL LAYOUT

---

### STEP\_06

#### PRINT

---

PRINT: double sided  
PAPER: 8.5 x 11 office paper

### STACK PAGES

### ALIGN EDGES

### DO NOT FOLD

### STAPLE LEFT SIDE

### USING COVER MARKS

---

### STEP\_07

#### DISTRIBUTE

---

### PRINT

### DISTRIBUTE

### STORE

### IN MANILA FOLDERS

### CHRONOLOGICALLY

### ARCHIVE

### REPEAT

---

### END\_OF\_PROTOCOL

---

### SCAN TO CREATE

YOUR OWN FLUX ISSUE



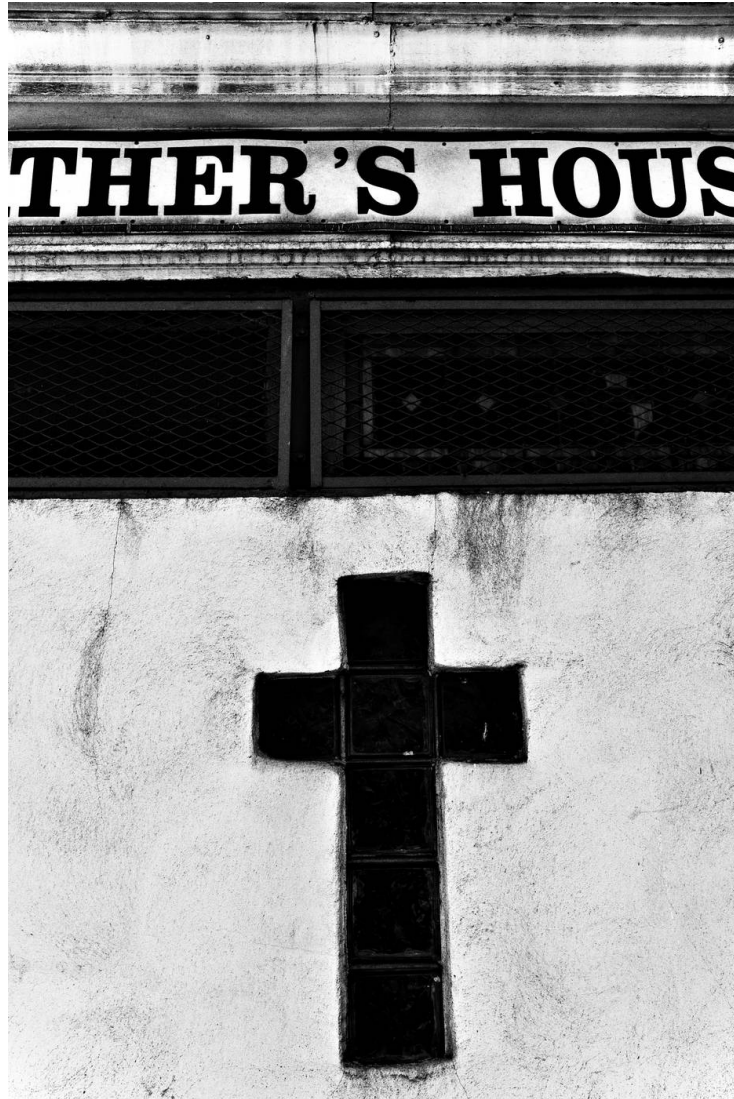








































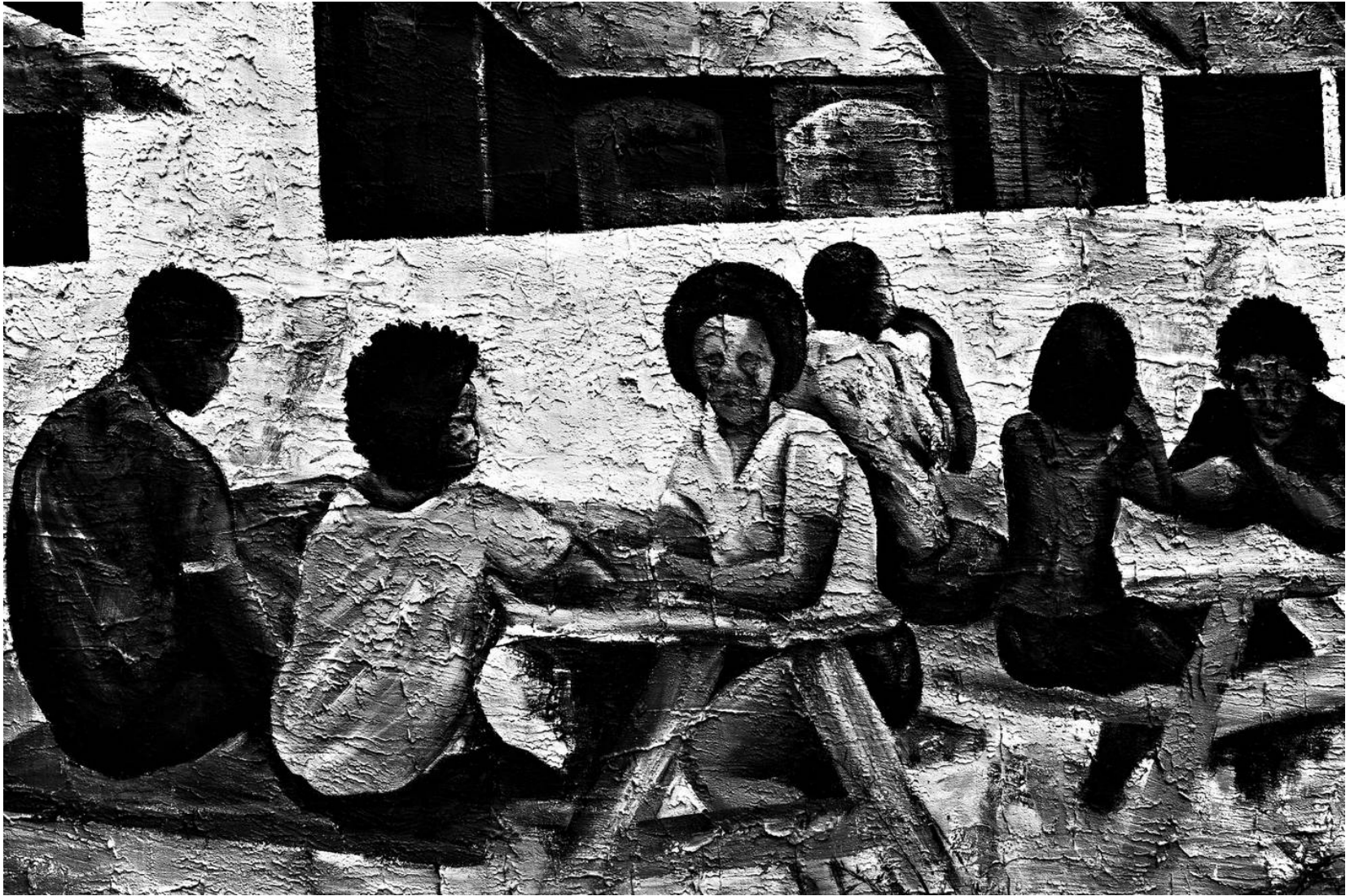






















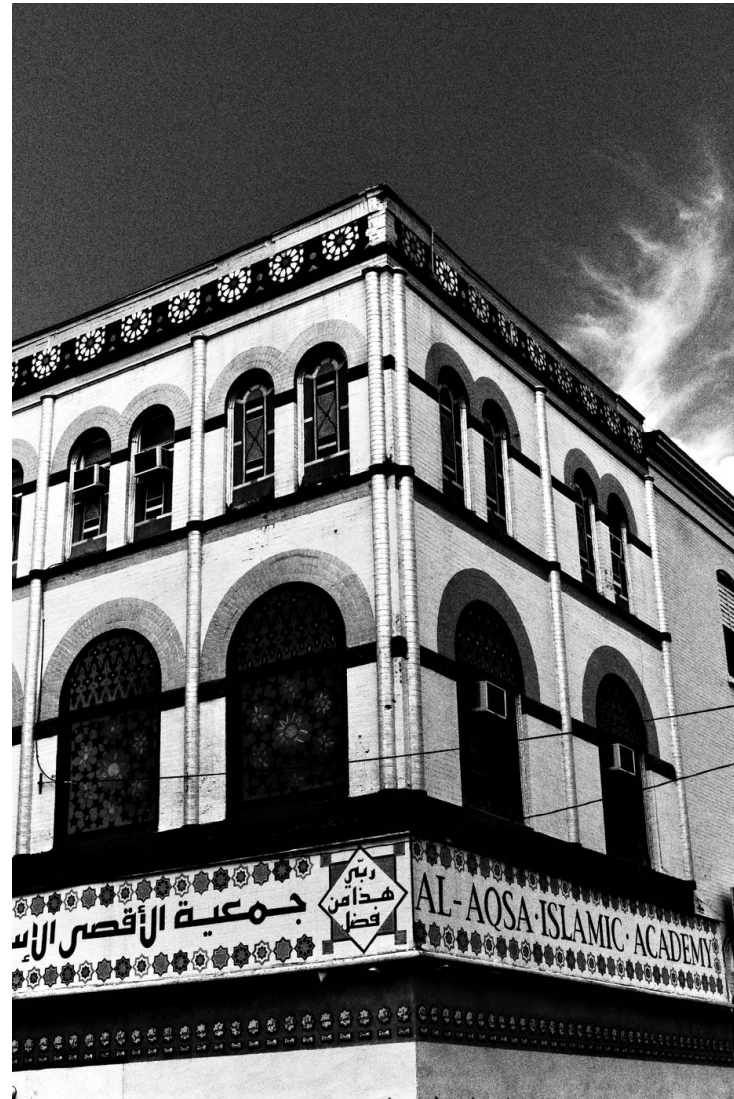
















001



002



003



004



005



006



007



008



009



010



011



012



013



014



015



016



017



018



019



020



021



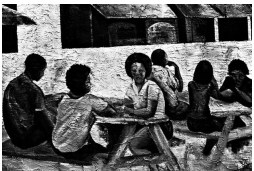
022



023



024



025



026



027



028



029



030



031



032



033



034



035



036

**FLUX\_447 INDEX**

001	-	2026-06-02	14:07:16	-	40.00153,	-75.14836	019	-	2026-06-02	14:24:52	-	39.99283,	-75.14803
002	-	2026-06-02	14:07:37	-	40.00150,	-75.14838	020	-	2026-06-02	14:26:30	-	39.99261,	-75.14810
003	-	2026-06-02	14:08:02	-	40.00151,	-75.14840	021	-	2026-06-02	14:27:11	-	39.99173,	-75.14831
004	-	2026-06-02	14:11:42	-	40.00124,	-75.14835	022	-	2026-06-02	14:27:29	-	39.99169,	-75.14832
005	-	2026-06-02	14:12:24	-	40.00124,	-75.14835	023	-	2026-06-02	14:28:13	-	39.99149,	-75.14840
006	-	2026-06-02	14:12:40	-	39.99866,	-75.14721	024	-	2026-06-02	14:28:27	-	39.99139,	-75.14840
007	-	2026-06-02	14:13:15	-	39.99834,	-75.14710	025	-	2026-06-02	14:33:09	-	39.99116,	-75.14847
008	-	2026-06-02	14:14:26	-	39.99822,	-75.14690	026	-	2026-06-02	14:33:52	-	39.99116,	-75.14847
009	-	2026-06-02	14:14:37	-	39.99815,	-75.14694	027	-	2026-06-02	14:35:19	-	39.99116,	-75.14847
010	-	2026-06-02	14:15:09	-	39.99781,	-75.14692	028	-	2026-06-02	14:40:41	-	39.98473,	-75.14426
011	-	2026-06-02	14:16:32	-	39.99781,	-75.14689	029	-	2026-06-02	14:41:49	-	39.98364,	-75.14410
012	-	2026-06-02	14:19:24	-	39.99627,	-75.14714	030	-	2026-06-02	14:44:53	-	39.98341,	-75.14419
013	-	2026-06-02	14:19:58	-	39.99627,	-75.14714	031	-	2026-06-02	14:48:11	-	39.98168,	-75.14395
014	-	2026-06-02	14:20:46	-	39.99439,	-75.14762	032	-	2026-06-02	14:48:45	-	39.98168,	-75.14395
015	-	2026-06-02	14:21:03	-	39.99439,	-75.14762	033	-	2026-06-02	14:49:16	-	39.97943,	-75.14324
016	-	2026-06-02	14:22:19	-	39.99371,	-75.14781	034	-	2026-06-02	14:55:25	-	39.97613,	-75.14244
017	-	2026-06-02	14:23:19	-	39.99321,	-75.14792	035	-	2026-06-02	14:55:46	-	39.97500,	-75.14220
018	-	2026-06-02	14:24:33	-	39.99286,	-75.14804	036	-	2026-06-02	14:58:10	-	39.97494,	-75.14219



